

GLYCOPHORIN C RABBIT MAB

Cat.#: N261640

Product Name: Anti-Glycophorin C Rabbit Monoclonal Antibody

Synonyms: GYPC; CD236; CD236R; GE; GPC; GYPD

UNIPROT ID: P04921

Background: This protein is a minor sialoglycoprotein in human erythrocyte membranes. The blood group Gerbich antigens and receptors for Plasmodium falciparum merozoites are most likely located within the extracellular domain.

Immunogen: A synthetic peptide of human Glycophorin C

Applications: WB, ICC/IF, IP

Recommended Dilutions: WB: 1/500-1/1000 IF: 1/50-1/200 IP: 1/20

Host Species: Rabbit

Clonality: Rabbit Monoclonal

Clone ID: R04-8F4

MW: Calculated MW: 14 kDa; Observed MW: 43 kDa

Isotype: IgG

Purification: Affinity Purified

Species Reactivity: Human

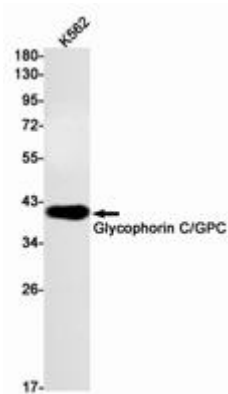
Conjugation: Unconjugated

Modification: Unmodified

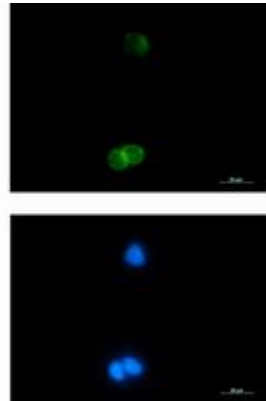
Constituents: PBS (without Mg²⁺ and Ca²⁺), pH 7.3 containing 50% glycerol, 0.5% BSA and 0.02% sodium azide

Research Areas: Cardiovascular

Storage & Shipping: Store at -20°C. Avoid repeated freezing and thawing



Western blot analysis of Glycophorin C/GPC in K562 lysates using Glycophorin C/GPC antibody.



Immunocytochemistry analysis of Glycophorin C (green) in K562 using Glycophorin C antibody, and DAPI (blue).