

## GLYCOGEN SYNTHASE 1 RABBIT MAB

**Cat.#:** N262289

**Product Name:** Anti-Glycogen Synthase 1 Rabbit Monoclonal Antibody

**Synonyms:** GYS1; GYS; Glycogen [starch] synthase; muscle

**UNIPROT ID:** P13807

**Background:** Transfers the glycosyl residue from UDP-Glc to the non-reducing end of alpha-1,4-glucan. Allosteric activation by glucose-6-phosphate. Phosphorylation reduces the activity towards UDP-glucose. When in the non-phosphorylated state, glycogen synthase does not require glucose-6-phosphate as an allosteric activator; when phosphorylated it does.

**Immunogen:** A synthetic peptide of human Glycogen synthase 1

**Applications:** WB, ICC/IF, IP

**Recommended Dilutions:** WB: 1/500-1/1000 IF: 1/50-1/200 IP: 1/20

**Host Species:** Rabbit

**Clonality:** Rabbit Monoclonal

**Clone ID:** R02-2F3

**MW:** Calculated MW: 84 kDa; Observed MW: 84 kDa

**Isotype:** IgG

**Purification:** Affinity Purified

**Species Reactivity:** Human, Rat

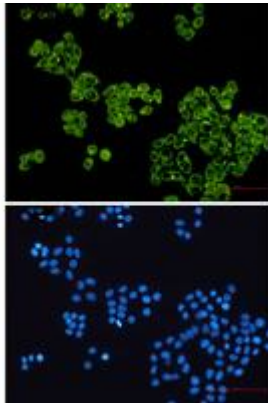
**Conjugation:** Unconjugated

**Modification:** Unmodified

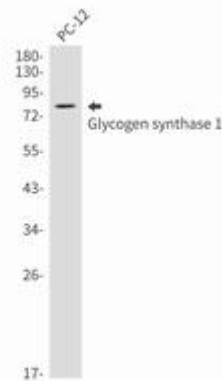
**Constituents:** PBS (without Mg<sup>2+</sup> and Ca<sup>2+</sup>), pH 7.3 containing 50% glycerol, 0.5% BSA and 0.02% sodium azide

**Research Areas:** Signal Transduction

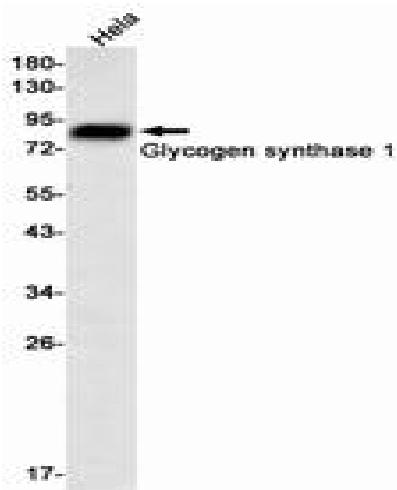
**Storage & Shipping:** Store at -20°C. Avoid repeated freezing and thawing



Immunocytochemistry analysis of Glycogen synthase 1 (green) in HeLa using Glycogen synthase 1 antibody, and DAPI (blue)



Western blot analysis of Glycogen synthase 1 in PC-12 lysates using Glycogen Synthase 1 antibody.



Western blot analysis of Glycogen synthase 1 in HeLa lysates using Glycogen synthase 1 antibody.