

## GLUTATHIONE SYNTHETASE RABBIT MAB

**Cat.#:** N262287

**Product Name:** Anti-Glutathione Synthetase Rabbit Monoclonal Antibody

**Synonyms:** Glutathione synthase; Glutathione synthetase; GSH S; GSH synthetase; GSH-S; GSHS; GSS; HEL-S-64p; HEL-S-88n

**UNIPROT ID:** P48637

**Background:** Sulfur metabolism; glutathione biosynthesis; glutathione from L-cysteine and L-glutamate: step 2/2.

**Immunogen:** A synthetic peptide of human Glutathione Synthetase

**Applications:** WB,IHC-F,IHC-P,ICC/IF

**Recommended Dilutions:** WB: 1/500-1/1000 IHC: 1/50-1/100 IF: 1/50-1/200

**Host Species:** Rabbit

**Clonality:** Rabbit Monoclonal

**Clone ID:** R07-5G5

**MW:** Calculated MW: 52 kDa; Observed MW: 52 kDa

**Isotype:** IgG

**Purification:** Affinity Purified

**Species Reactivity:** Human,Mouse,Rat

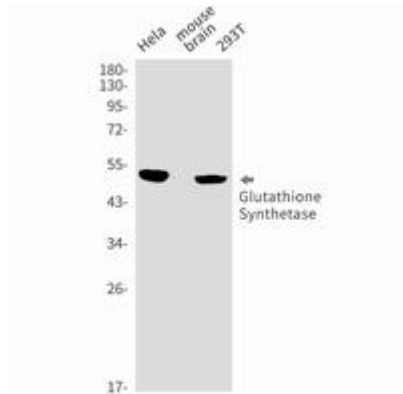
**Conjugation:** Unconjugated

**Modification:** Unmodified

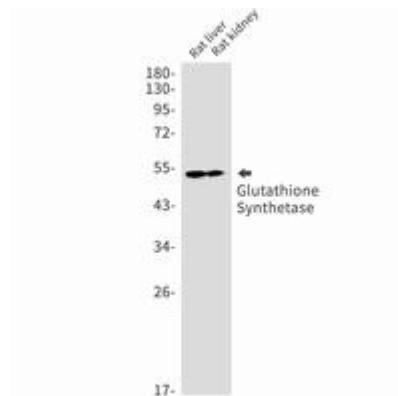
**Constituents:** PBS (without Mg<sup>2+</sup> and Ca<sup>2+</sup>), pH 7.3 containing 50% glycerol, 0.5% BSA and 0.02% sodium azide

**Research Areas:** Signal Transduction

**Storage & Shipping:** Store at -20°C. Avoid repeated freezing and thawing



Western blot analysis of Glutathione Synthetase in HeLa, mouse brain, 293T, Jurkat lysates using Glutathione Synthetase antibody.



Western blot analysis of Glutathione Synthetase in rat kidney, rat liver lysates using Glutathione Synthetase antibody.