

GLUTATHIONE SYNTHETASE RABBIT MAB

Cat.#: N263347

Product Name: Anti-Glutathione Synthetase Rabbit Monoclonal Antibody

Synonyms: Glutathione synthase; Glutathione synthetase; GSH S; GSH synthetase; GSH-S; GSHS; GSS; HEL-S-64p; HEL-S-88n

UNIPROT ID: P48637

Background: Sulfur metabolism; glutathione biosynthesis; glutathione from L-cysteine and L-glutamate: step 2/2.

Immunogen: A synthetic peptide of human Glutathione Synthetase

Applications: WB,IHC-P

Recommended Dilutions: WB: 1/500-1/1000 IHC: 1/50-1/100

Host Species: Rabbit

Clonality: Rabbit Monoclonal

Clone ID: R07-2B0

MW: Calculated MW: 52 kDa; Observed MW: 52 kDa

Isotype: IgG

Purification: Affinity Purified

Species Reactivity: Human,Mouse,Rat

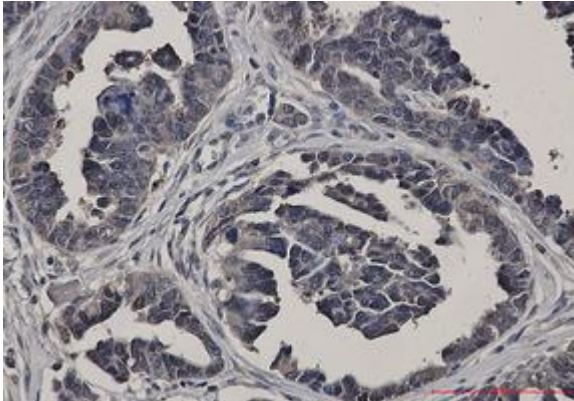
Conjugation: Unconjugated

Modification: Unmodified

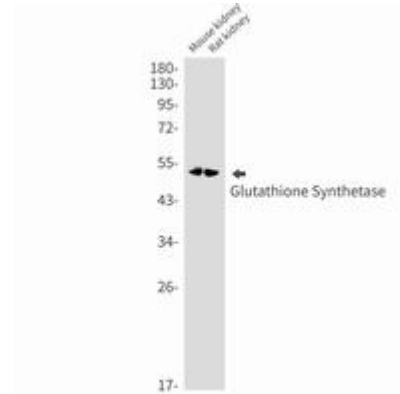
Constituents: PBS (without Mg²⁺ and Ca²⁺), pH 7.3 containing 50% glycerol, 0.5% BSA and 0.02% sodium azide

Research Areas: Signal Transduction

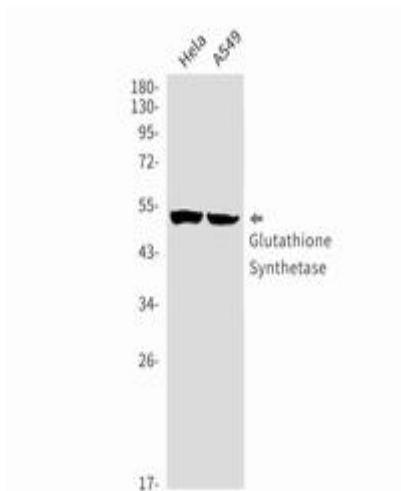
Storage & Shipping: Store at -20°C. Avoid repeated freezing and thawing



Immunohistochemistry analysis of paraffin-embedded Human Cholangiocarcinoma using Glutathione Synthetase antibody. High-pressure and temperature Sodium Citrate pH 6.0 was used for antigen retrieval.



Western blot analysis of Glutathione Synthetase in mouse kidney, rat kidney lysates using Glutathione Synthetase antibody.



Western blot analysis of Glutathione Synthetase in HeLa, A549 lysates using Glutathione Synthetase antibody.