

## GLUTAMINASE RABBIT MAB

**Cat.#:** N262281

**Product Name:** Anti-Glutaminase Rabbit Monoclonal Antibody

**Synonyms:** Glutaminase kidney isoform; GLS; GLS1; KGA; K-glutaminase; GAM; GAC; Glutaminase C; L-glutamine amidohydrolase

**UNIPROT ID:** O94925

**Background:** Catalyzes the first reaction in the primary pathway for the renal catabolism of glutamine. Plays a role in maintaining acid-base homeostasis. Regulates the levels of the neurotransmitter glutamate in the brain. Isoform 2 lacks catalytic activity. Isoform 1 and isoform 3 are activated by phosphate. Inhibited by BPTES. BPTES binds between subunits and favors dissociation of the tetramer into dimers.

**Immunogen:** Recombinant protein of human Glutaminase C

**Applications:** WB, ICC/IF, IP

**Recommended Dilutions:** WB: 1/500-1/1000 IF: 1/50-1/200 IP: 1/20

**Host Species:** Rabbit

**Clonality:** Rabbit Monoclonal

**Clone ID:** R08-3D8

**MW:** Calculated MW: 73 kDa; Observed MW: 68 kDa

**Isotype:** IgG

**Purification:** Affinity Purified

**Species Reactivity:** Human, Mouse, Rat

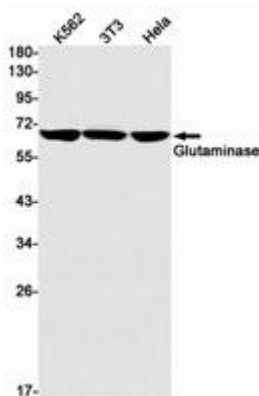
**Conjugation:** Unconjugated

**Modification:** Unmodified

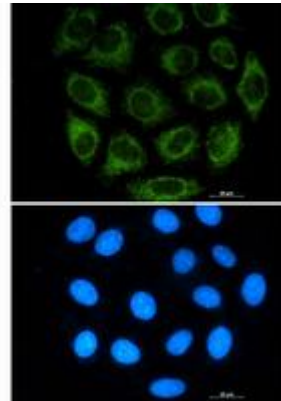
**Constituents:** PBS (without Mg<sup>2+</sup> and Ca<sup>2+</sup>), pH 7.3 containing 50% glycerol, 0.5% BSA and 0.02% sodium azide

**Research Areas:** Neuroscience, Glutamatergic Neurons

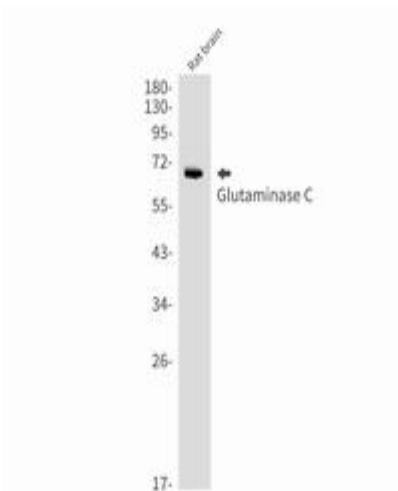
**Storage & Shipping:** Store at -20°C. Avoid repeated freezing and thawing



Western blot analysis of Glutaminase in K562, 3T3, HeLa lysates using Glutaminase antibody



Immunocytochemistry analysis of Glutaminase (green) in A549 using Glutaminase antibody, and DAPI (blue).



Western blot analysis of Glutaminase C in rat brain lysates using Glutaminase C antibody.