

GLRA1 RABBIT PAB

Cat.#: S220288

Product Name: Anti-GLRA1 Rabbit Polyclonal Antibody

Synonyms: STHE; HKPX1

UNIPROT ID: P23415 (Gene Accession - NP_000162)

Background: The protein encoded by this gene is a subunit of a pentameric inhibitory glycine receptor. The receptor mediates postsynaptic inhibition in the central nervous system. Defects in this gene are a cause of startle disease (STHE), also known as hereditary hyperekplexia or congenital stiff-person syndrome. Two transcript variants encoding different isoforms have been found for this gene.

Immunogen: Synthetic peptide of human GLRA1

Applications: ELISA, WB, IHC

Recommended Dilutions: IHC: 25-100;WB: 500-2000;ELISA: 2000-5000

Host Species: Rabbit

Clonality: Rabbit Polyclonal

Isotype: Immunogen-specific rabbit IgG

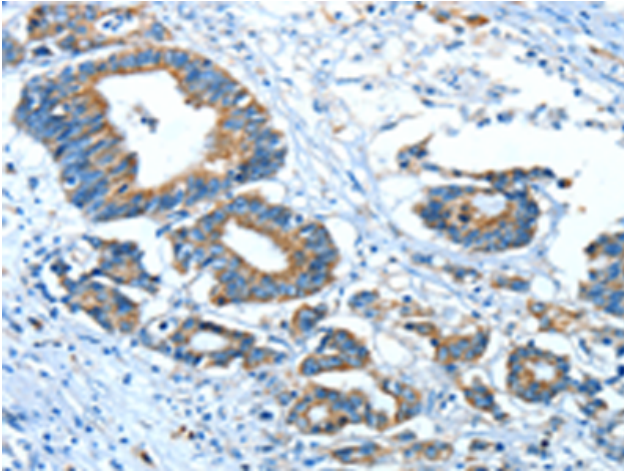
Purification: Antigen affinity purification

Species Reactivity: Human, Mouse, Rat

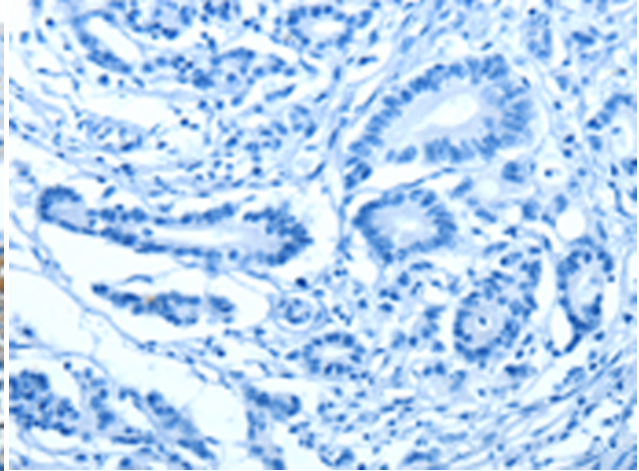
Constituents: PBS (without Mg²⁺ and Ca²⁺), pH 7.4, 150 mM NaCl, 0.05% Sodium Azide and 40% glycerol

Research Areas: Neuroscience

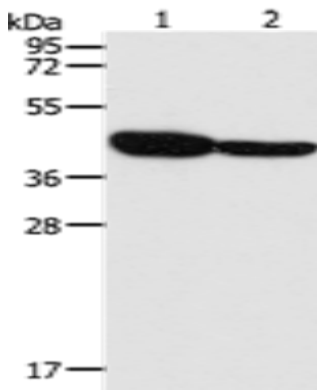
Storage & Shipping: Store at -20°C. Avoid repeated freezing and thawing



Immunohistochemistry analysis of paraffin embedded Human colon cancer tissue using 220288 (GLRA1 Antibody) at a dilution of 1/30 (Cytoplasm).



In comparison with the IHC on the left, the same paraffin-embedded Human colon cancer tissue is first treated with the synthetic peptide and then with 220288 (Anti-GLRA1 Antibody) at dilution 1/30.



Gel: 10% SDS-PAGE, Lysate: 40 μ g;
Lane 1-2: Mouse brain tissue, Human fetal brain tissue;
Primary antibody: 220288 (GLRA1 Antibody) at dilution 1/500;
Secondary antibody: Goat anti rabbit IgG at 1/8000 dilution;
Exposure time: 1 minute