

GLP2R RABBIT PAB

Cat.#: S216535

Product Name: Anti-GLP2R Rabbit Polyclonal Antibody

Synonyms:

UNIPROT ID: O95838 (Gene Accession - BC096262)

Background: This gene encodes a G protein-coupled receptor that is closely related to the glucagon receptor and binds to glucagon-like peptide-2 (GLP2). Signalling through GLP2 stimulates intestinal growth and increases villus height in the small intestine, concomitant with increased crypt cell proliferation and decreased enterocyte apoptosis.

Immunogen: Fusion protein of human GLP2R

Applications: ELISA, IHC

Recommended Dilutions: IHC: 50-200; ELISA: 5000-10000

Host Species: Rabbit

Clonality: Rabbit Polyclonal

Isotype: Immunogen-specific rabbit IgG

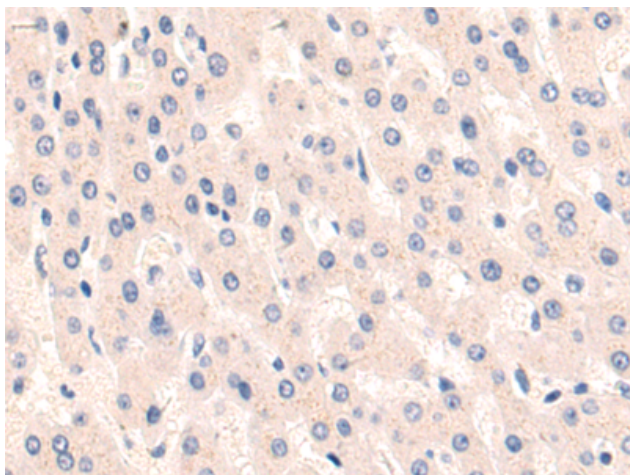
Purification: Antigen affinity purification

Species Reactivity: Human

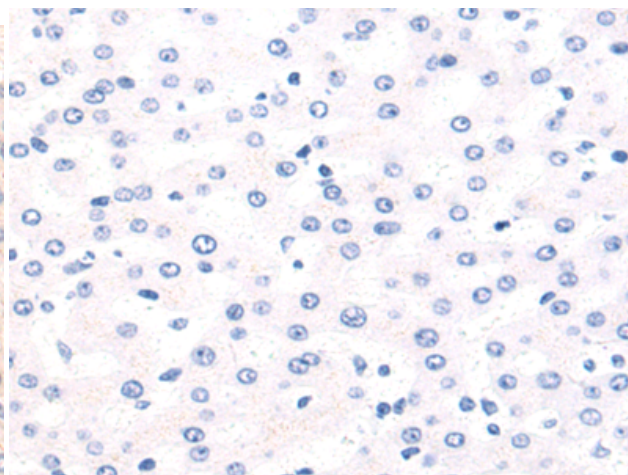
Constituents: PBS (without Mg²⁺ and Ca²⁺), pH 7.4, 150 mM NaCl, 0.05% Sodium Azide and 40% glycerol

Research Areas: Signal Transduction, Cancer

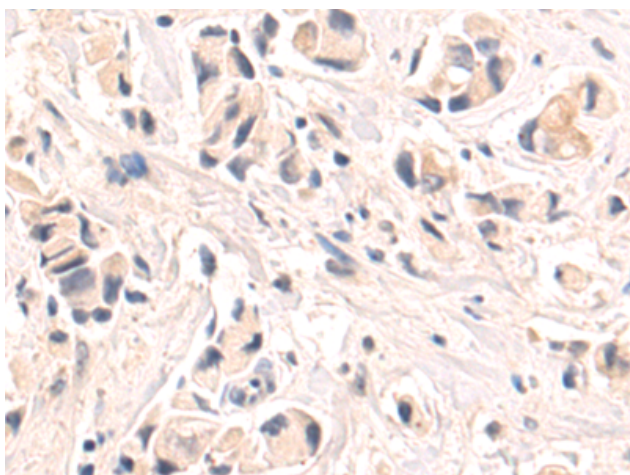
Storage & Shipping: Store at -20°C. Avoid repeated freezing and thawing



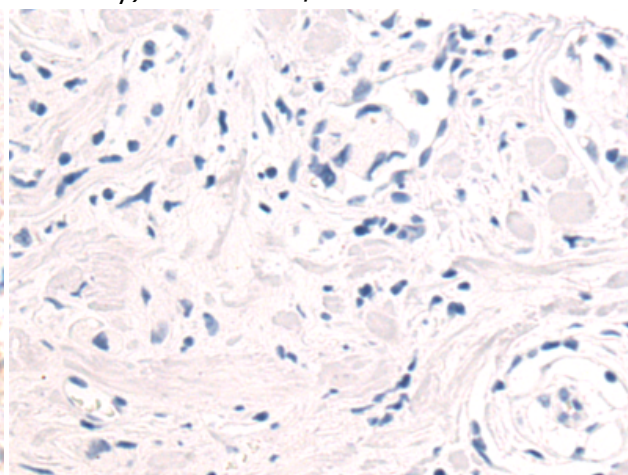
Immunohistochemistry analysis of paraffin embedded Human liver cancer tissue using 216535 (GLP2R Antibody) at a dilution of 1/75 (Cytoplasm).



In comparison with the IHC on the left, the same paraffin-embedded Human liver cancer tissue is first treated with the fusion protein and then with 216535 (Anti-GLP2R Antibody) at dilution 1/75.



The image on the left is immunohistochemistry of paraffin-embedded Human breast cancer tissue using 216535 (Anti-GLP2R Antibody) at a dilution of 1/75.



In comparison with the IHC on the left, the same paraffin-embedded Human breast cancer tissue is first treated with fusion protein and then with D220699 (Anti-GLP2R Antibody) at dilution 1/75.