

## GLP1R RABBIT PAB

**Cat.#:** S216534

**Product Name:** Anti-GLP1R Rabbit Polyclonal Antibody

**Synonyms:**

**UNIPROT ID:** P43220 (Gene Accession - BC113493 )

**Background:** The glucagon-like peptide 1 receptor (GLP1R) is a human gene which resides on chromosome 6. The protein encoded by this gene is a member of the glucagon receptor family of G protein-coupled receptors. GLP1R binds specifically the glucagon-like peptide-1 (GLP1) and has much lower affinity for related peptides such as the gastric inhibitory polypeptide and glucagon. GLP1R is known to be expressed in pancreatic beta cells. Activated GLP1R stimulates the adenylyl cyclase pathway which results in increased insulin synthesis and release of insulin. Consequently GLP1R has been suggested as a potential target for the treatment of diabetes.

**Immunogen:** Fusion protein of human GLP1R

**Applications:** ELISA, IHC

**Recommended Dilutions:** IHC: 25-100; ELISA: 2000-5000

**Host Species:** Rabbit

**Clonality:** Rabbit Polyclonal

**Isotype:** Immunogen-specific rabbit IgG

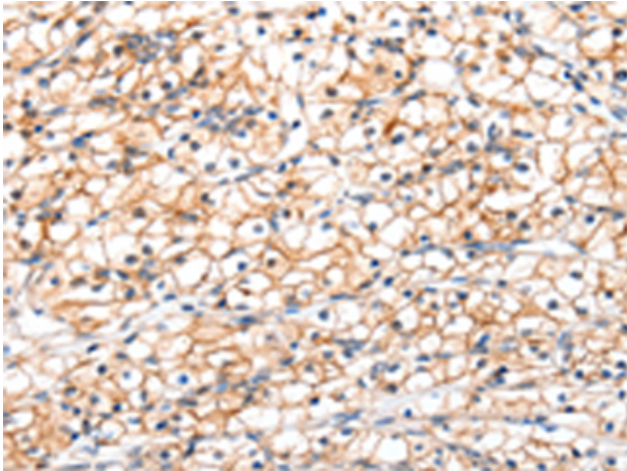
**Purification:** Antigen affinity purification

**Species Reactivity:** Human, Mouse, Rat

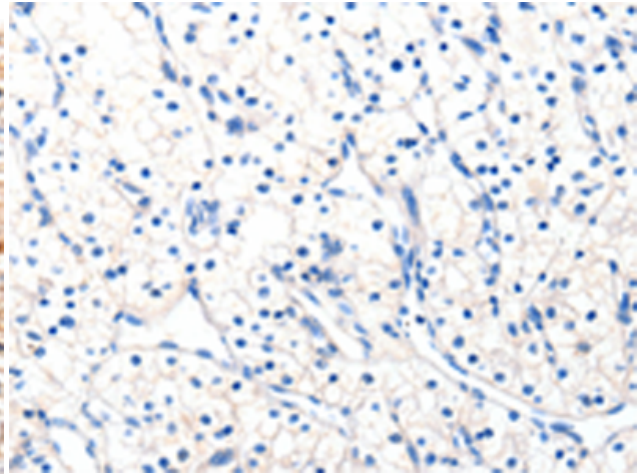
**Constituents:** PBS (without Mg<sup>2+</sup> and Ca<sup>2+</sup>), pH 7.4, 150 mM NaCl, 0.05% Sodium Azide and 40% glycerol

**Research Areas:** Neuroscience, Cardiovascular

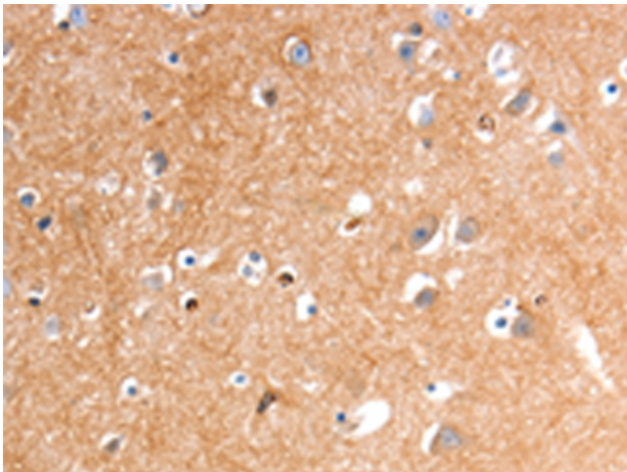
**Storage & Shipping:** Store at -20°C. Avoid repeated freezing and thawing



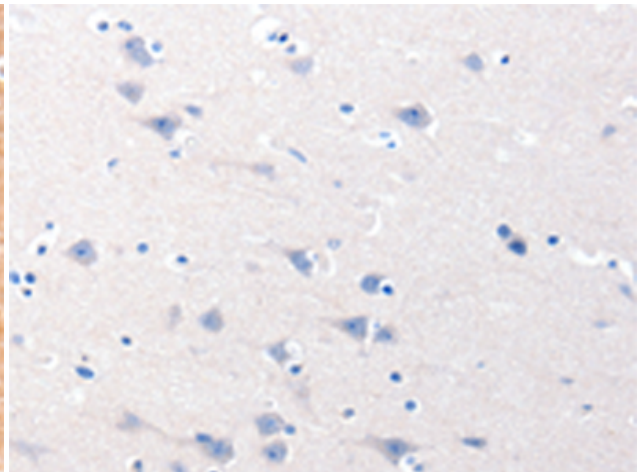
Immunohistochemistry analysis of paraffin embedded Human renal cancer tissue using 216534 (GLP1R Antibody) at a dilution of 1/20 (Cytoplasm, Cell membrane).



In comparison with the IHC on the left, the same paraffin-embedded Human renal cancer tissue is first treated with the fusion protein and then with 216534 (Anti-GLP1R Antibody) at dilution 1/20.



The image on the left is immunohistochemistry of paraffin-embedded Human brain tissue using 216534 (Anti-GLP1R Antibody) at a dilution of 1/20.



In comparison with the IHC on the left, the same paraffin-embedded Human brain tissue is first treated with fusion protein and then with D220698 (Anti-GLP1R Antibody) at dilution 1/20.