

GK5 RABBIT PAB

Cat.#: S218632

Product Name: Anti-GK5 Rabbit Polyclonal Antibody

Synonyms:

UNIPROT ID: Q6ZS86 (Gene Accession - BC032470)

Background: GK5(Putative glycerol kinase 5) is also named as ATP:glycerol 3-phosphotransferase 5 and belongs to the FGGY kinase family.It is involved in Glycerol metabolism and catalyzes the phosphorylation of glycerol by ATP, yielding ADP and glycerol-3-phosphate.It has 3 isoforms produced by alternative splicing with the MW of 59 kDa, 34 kDa and 28 kDa.

Immunogen: Full length fusion protein

Applications: ELISA, WB, IHC

Recommended Dilutions: IHC: 30-150;WB: 500-2000;ELISA: 5000-10000

Host Species: Rabbit

Clonality: Rabbit Polyclonal

Isotype: Immunogen-specific rabbit IgG

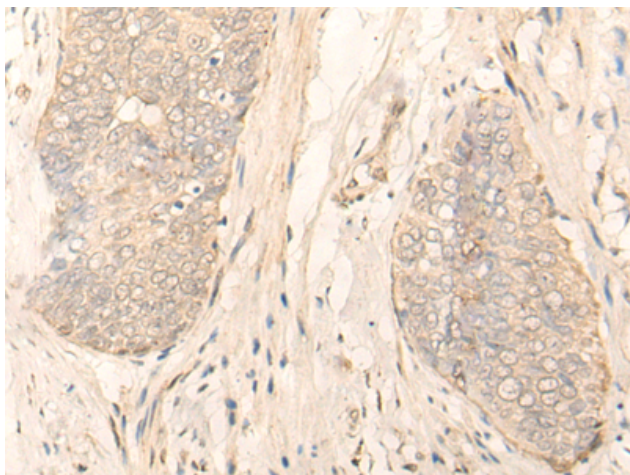
Purification: Antigen affinity purification

Species Reactivity: Human

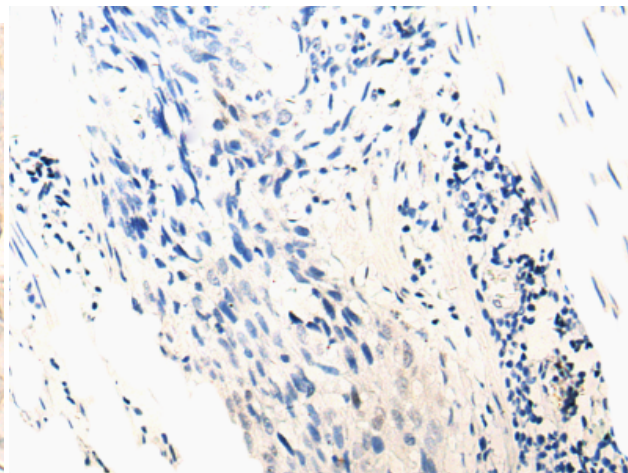
Constituents: PBS (without Mg²⁺ and Ca²⁺), pH 7.4, 150 mM NaCl, 0.05% Sodium Azide and 40% glycerol

Research Areas: Metabolism, Cell Biology

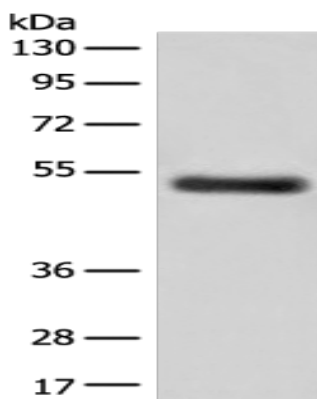
Storage & Shipping: Store at -20°C. Avoid repeated freezing and thawing



Immunohistochemistry analysis of paraffin embedded Human esophagus cancer tissue using 218632(GK5 Antibody) at a dilution of 1/35(Cytoplasm and Nucleus).



In comparison with the IHC on the left, the same paraffin-embedded Human esophagus cancer tissue is first treated with the fusion protein and then with 218632(Anti-GK5 Antibody) at dilution 1/35.



Gel: 8%SDS-PAGE, Lysate: 40 μ g;
Lane: Human breast cancer tissue lysate;
Primary antibody: 218632(GK5 Antibody) at dilution 1/500;
Secondary antibody: Goat anti rabbit IgG at 1/8000 dilution;
Exposure time: 90 seconds