

GJB2 RABBIT PAB

Cat.#: S213558

Product Name: Anti-GJB2 Rabbit Polyclonal Antibody

Synonyms: HID; KID; PPK; BAPS; CX26; DFNA3; DFNBI; NSRD1; DFNA3A; DFNB1A

UNIPROT ID: P29033 (Gene Accession - NP_003995)

Background: This gene encodes a member of the gap junction protein family. The gap junctions were first characterized by electron microscopy as regionally specialized structures on plasma membranes of contacting adherent cells. These structures were shown to consist of cell-to-cell channels that facilitate the transfer of ions and small molecules between cells. The gap junction proteins, also known as connexins, purified from fractions of enriched gap junctions from different tissues differ. According to sequence similarities at the nucleotide and amino acid levels, the gap junction proteins are divided into two categories, alpha and beta. Mutations in this gene are responsible for as much as 50% of pre-lingual, recessive deafness.

Immunogen: Synthetic peptide of human GJB2

Applications: ELISA, IHC

Recommended Dilutions: IHC: 100-300; ELISA: 1000-10000

Host Species: Rabbit

Clonality: Rabbit Polyclonal

Isotype: Immunogen-specific rabbit IgG

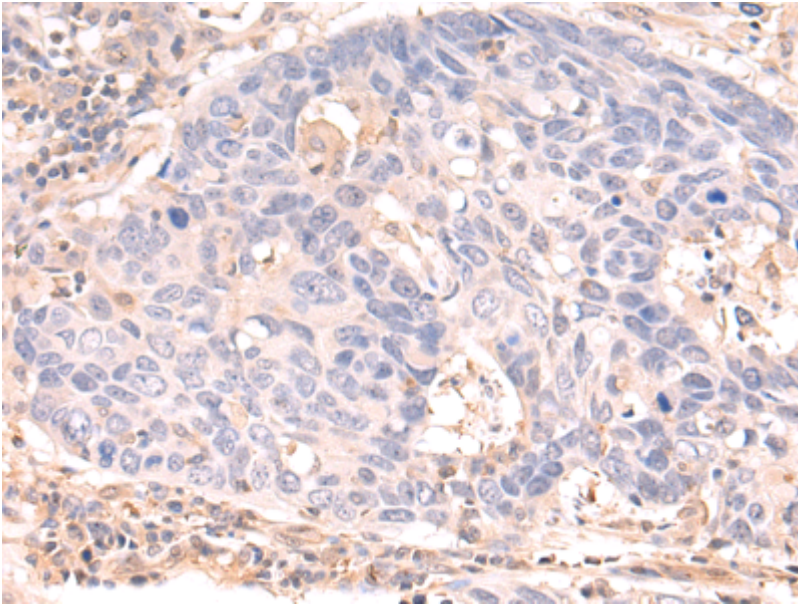
Purification: Antigen affinity purification

Species Reactivity: Human, Rat

Constituents: PBS (without Mg²⁺ and Ca²⁺), pH 7.4, 150 mM NaCl, 0.05% Sodium Azide and 40% glycerol

Research Areas: Signal Transduction, Neuroscience

Storage & Shipping: Store at -20°C. Avoid repeated freezing and thawing



Immunohistochemistry analysis of paraffin-embedded Human lung cancer tissue using 213558(GJB2 Antibody) at a dilution of 1/100(Cytoplasm).