

## **GIPR(3G5) IGG1 CHIMERIC MAB**

目录: 28564

产品名称: GIPR(3G5) IgG1 Chimeric Monoclonal Antibody

基因符号: PGQTL2

描述: GIPR antibody(3G5) IgG1 Chimeric Monoclonal Antibody

背景: This gene encodes a G-protein coupled receptor for gastric inhibitory polypeptide (GIP), which was originally identified as an activity in gut extracts that inhibited gastric acid secretion and gastrin release, but subsequently was demonstrated to stimulate insulin release in the presence of elevated glucose. Mice lacking this gene exhibit higher blood glucose levels with impaired initial insulin response after oral glucose load. Defect in this gene thus may contribute to the pathogenesis of diabetes. [provided by RefSeq, Oct 2011]

经过测试的应用: Flow Cyt

推荐稀释度: Flow Cyt 1/100

种属反应性: Rabbit

亚型: Rabbit/Human Fc chimeric IgG1

纯化: Purified from cell culture supernatant by affinity chromatography

种属反应性: Human GIPR

成分: Lyophilized from sterile PBS, pH 7.4. 5 % – 8% trehalose is added as protectants before lyophilization.

储存和运输: Store at -20°C to -80°C for 12 months in lyophilized form.

After reconstitution, if not intended for use within a month, aliquot and store at -80°C (Avoid repeated freezing and thawing).

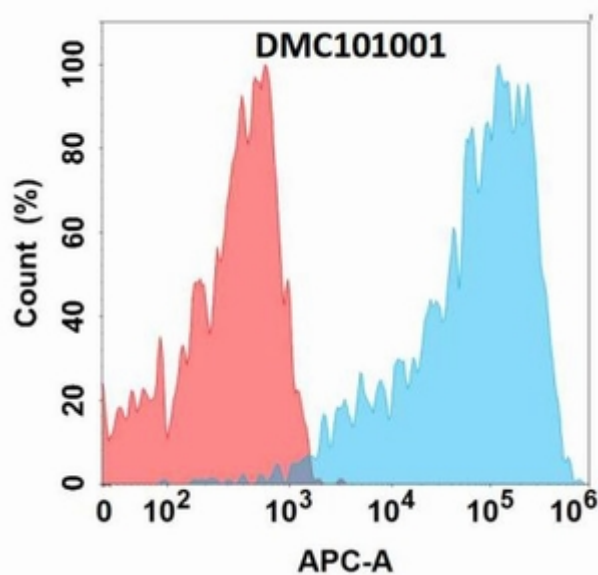


Figure 1. Flow cytometry analysis with GIPR (3G5) mAb on Expi293 cells transfected with human GIPR (Blue histogram) or Expi293 transfected with irrelevant protein (Red histogram).