

GIPC1 RABBIT PAB

Cat.#: S222082

Product Name: Anti-GIPC1 Rabbit Polyclonal Antibody

Synonyms: NIP; GIPC; IIP-1; TIP-2; SEMCAP; C19orf3; Hs.6454; GLUTICBP; RGS19IP1; SYNECTIN; SYNECTIIN

UNIPROT ID: O14908 (Gene Accession - NP_005707)

Background: GIPC1 is a scaffolding protein that regulates cell surface receptor expression and trafficking.

Immunogen: Synthetic peptide of human GIPC1

Applications: ELISA, WB, IHC

Recommended Dilutions: IHC: 40-200;WB: 500-2000;ELISA: 5000-10000

Host Species: Rabbit

Clonality: Rabbit Polyclonal

Isotype: Immunogen-specific rabbit IgG

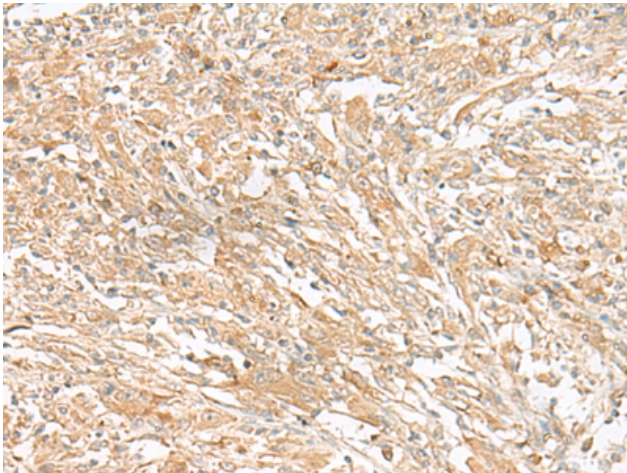
Purification: Antigen affinity purification

Species Reactivity: Human, Mouse, Rat

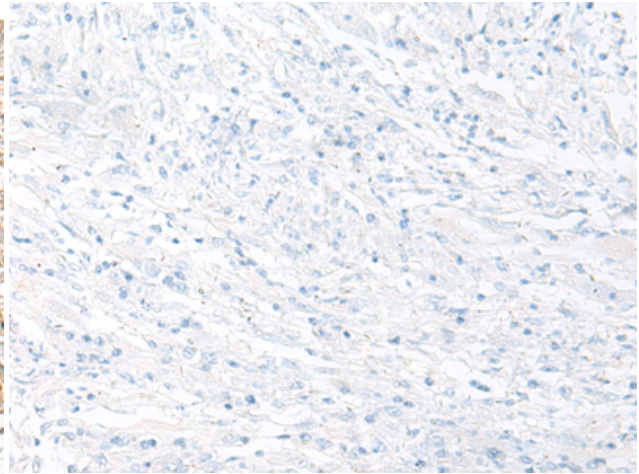
Constituents: PBS (without Mg²⁺ and Ca²⁺), pH 7.4, 150 mM NaCl, 0.05% Sodium Azide and 40% glycerol

Research Areas: Signal Transduction

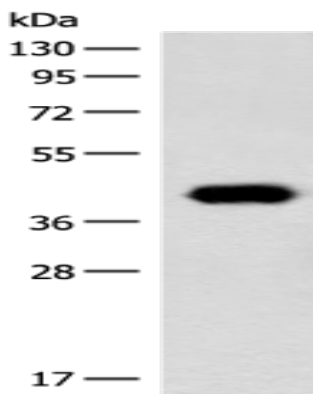
Storage & Shipping: Store at -20°C. Avoid repeated freezing and thawing



Immunohistochemistry analysis of paraffin embedded Human liver cancer tissue using 222082(GIPC1 Antibody) at a dilution of 1/50(Cytoplasm).



In comparison with the IHC on the left, the same paraffin-embedded Human liver cancer tissue is first treated with the synthetic peptide and then with 222082(Anti-GIPC1 Antibody) at dilution 1/50.



Gel: 8%SDS-PAGE, Lysate: 40 μ g;
Lane: Hela cell lysate;
Primary antibody: 222082(GIPC1 Antibody) at dilution 1/400;
Secondary antibody: Goat anti rabbit IgG at 1/8000 dilution;
Exposure time: 1 minute