

GINS2 RABBIT PAB

Cat.#: S212689

Product Name: Anti-GINS2 Rabbit Polyclonal Antibody

Synonyms: PSF2; Pfs2; HSPC037

UNIPROT ID: Q9Y248 (Gene Accession - BC010164)

Background: The yeast heterotetrameric GINS complex is made up of Sld5 (GINS4; MIM 610611), Psf1 (GINS1; MIM 610608), Psf2, and Psf3 (GINS3; MIM 610610). The formation of this complex is essential for the initiation of DNA replication in yeast and Xenopus egg extracts (Ueno et al., 2005 [PubMed 16287864]). See GINS1 for additional information about the GINS complex.

Immunogen: Fusion protein of human GINS2

Applications: ELISA, IHC

Recommended Dilutions: IHC: 40-200; ELISA: 5000-10000

Host Species: Rabbit

Clonality: Rabbit Polyclonal

Isotype: Immunogen-specific rabbit IgG

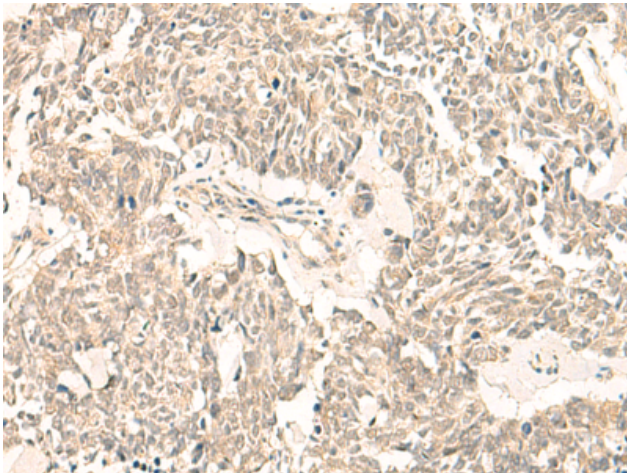
Purification: Antigen affinity purification

Species Reactivity: Human, Mouse

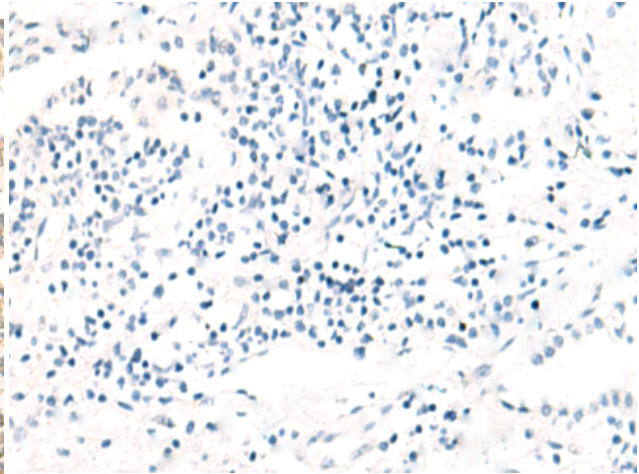
Constituents: PBS (without Mg²⁺ and Ca²⁺), pH 7.4, 150 mM NaCl, 0.05% Sodium Azide and 40% glycerol

Research Areas: Cancer

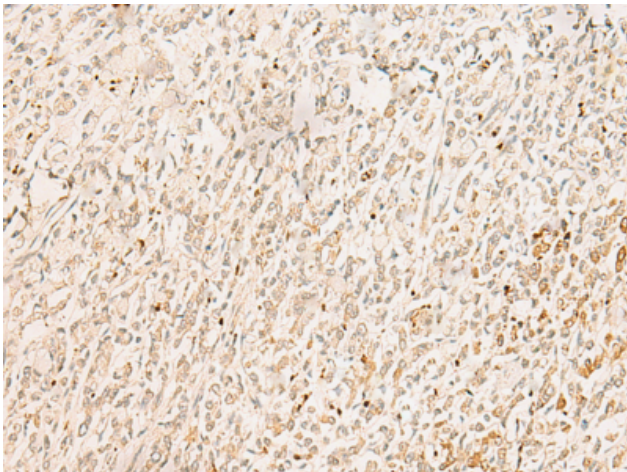
Storage & Shipping: Store at -20°C. Avoid repeated freezing and thawing



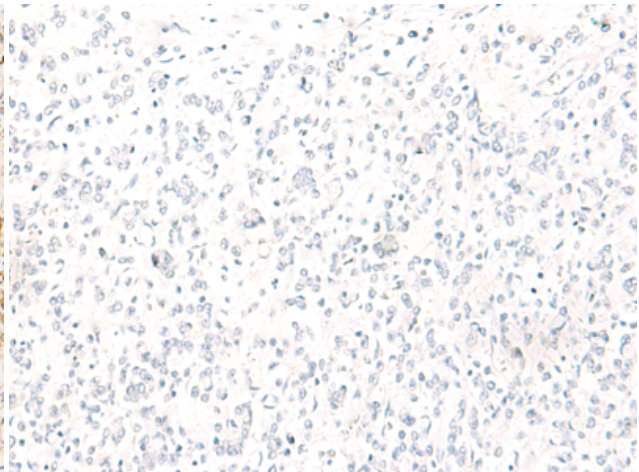
Immunohistochemistry analysis of paraffin embedded Human lung cancer tissue using 212689(GINS2 Antibody) at a dilution of 1/50(Nucleus).



In comparison with the IHC on the left, the same paraffin-embedded Human lung cancer tissue is first treated with the fusion protein and then with 212689(Anti-GINS2 Antibody) at dilution 1/50.



The image on the left is immunohistochemistry of paraffin-embedded Human gastric cancer tissue using 212689(Anti-GINS2 Antibody) at a dilution of 1/50.



In comparison with the IHC on the left, the same paraffin-embedded Human gastric cancer tissue is first treated with fusion protein and then with D125622(Anti-GINS2 Antibody) at dilution 1/50.