

## GIGYF1 RABBIT PAB

**Cat.#:** S222081

**Product Name:** Anti-GIGYF1 Rabbit Polyclonal Antibody

**Synonyms:** GYF1; PERQ1

**UNIPROT ID:** O75420 (Gene Accession - NP\_072096 )

**Background:** This gene encodes a member of the gyf family of adaptor proteins. The encoded protein contains a gyf protein interaction domain. It binds growth factor receptor bound 10, another adaptor protein that binds activated insulin-like growth factor 1 and insulin receptors and regulates receptor signaling.

**Immunogen:** Synthetic peptide of human GIGYF1

**Applications:** ELISA, IHC

**Recommended Dilutions:** IHC: 50-100; ELISA: 5000-10000

**Host Species:** Rabbit

**Clonality:** Rabbit Polyclonal

**Isotype:** Immunogen-specific rabbit IgG

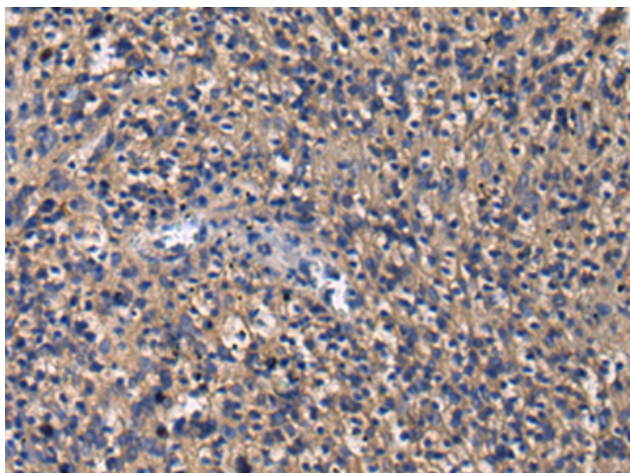
**Purification:** Antigen affinity purification

**Species Reactivity:** Human

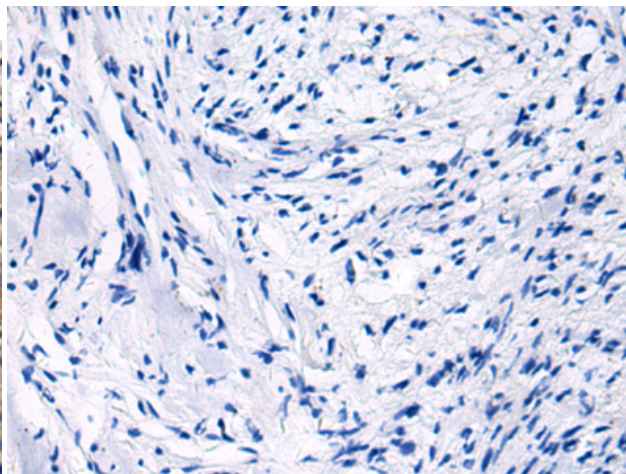
**Constituents:** PBS (without Mg<sup>2+</sup> and Ca<sup>2+</sup>), pH 7.4, 150 mM NaCl, 0.05% Sodium Azide and 40% glycerol

**Research Areas:** Signal Transduction

**Storage & Shipping:** Store at -20°C. Avoid repeated freezing and thawing



Immunohistochemistry analysis of paraffin embedded Human brain using 222081(GIGYF1 Antibody) at a dilution of 1/30(Cytoplasm).



In comparison with the IHC on the left, the same paraffin-embedded Human brain is first treated with the synthetic peptide and then with 222081(Anti-GIGYF1 Antibody) at dilution 1/30.