

## GHITM RABBIT PAB

**Cat.#:** S217606

**Product Name:** Anti-GHITM Rabbit Polyclonal Antibody

**Synonyms:** DERP2; MICS1; My021; PTD010; TMBIM5; HSPC282

**UNIPROT ID:** Q9H3K2 (Gene Accession - BC010354 )

**Background:** Growth hormone-inducible transmembrane protein is a protein that in humans is encoded by the GHITM gene. Required for the mitochondrial tubular network and cristae organization. Involved in apoptotic release of cytochrome c.

**Immunogen:** Fusion protein of human GHITM

**Applications:** ELISA, IHC

**Recommended Dilutions:** IHC: 50-200; ELISA: 2000-5000

**Host Species:** Rabbit

**Clonality:** Rabbit Polyclonal

**Isotype:** Immunogen-specific rabbit IgG

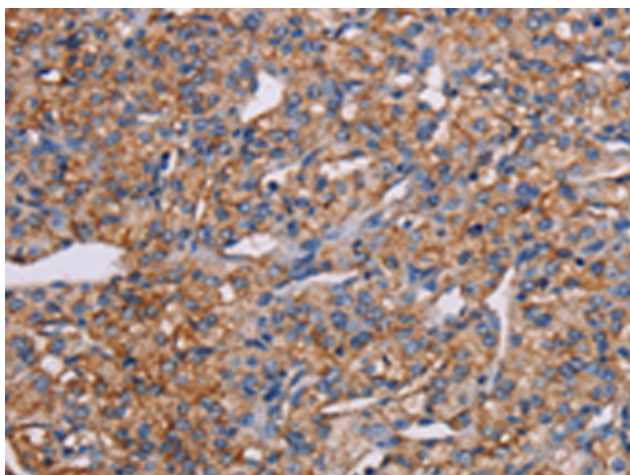
**Purification:** Antigen affinity purification

**Species Reactivity:** Human, Mouse, Rat

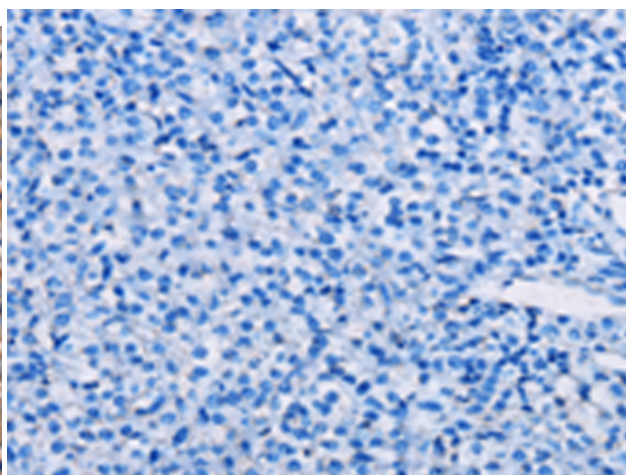
**Constituents:** PBS (without Mg<sup>2+</sup> and Ca<sup>2+</sup>), pH 7.4, 150 mM NaCl, 0.05% Sodium Azide and 40% glycerol

**Research Areas:** Cancer, Metabolism

**Storage & Shipping:** Store at -20°C. Avoid repeated freezing and thawing



Immunohistochemistry analysis of paraffin embedded Human prostate cancer tissue using 217606 (GHITM Antibody) at a dilution of 1/30 (Cytoplasm).



In comparison with the IHC on the left, the same paraffin-embedded Human prostate cancer tissue is first treated with the fusion protein and then with 217606 (Anti-GHITM Antibody) at dilution 1/30.