

GHDC RABBIT PAB

Cat.#: S222079

Product Name: Anti-GHDC Rabbit Polyclonal Antibody

Synonyms: LGP1; D11LGP1

UNIPROT ID: Q8N2G8 (Gene Accession - NP_115873)

Background: GHDC, also known as LGP1, is a GH3 domain-containing protein that is highly expressed in normal mammary tissues and mammary tumors. GHDC is primarily located in the nuclear envelope. In mouse, its gene is located on chromosome 11 adjacent to the STAT3/5 locus. Little is known of the function of this protein.

Immunogen: Synthetic peptide of human GHDC

Applications: ELISA, IHC

Recommended Dilutions: IHC: 50-300; ELISA: 5000-10000

Host Species: Rabbit

Clonality: Rabbit Polyclonal

Isotype: Immunogen-specific rabbit IgG

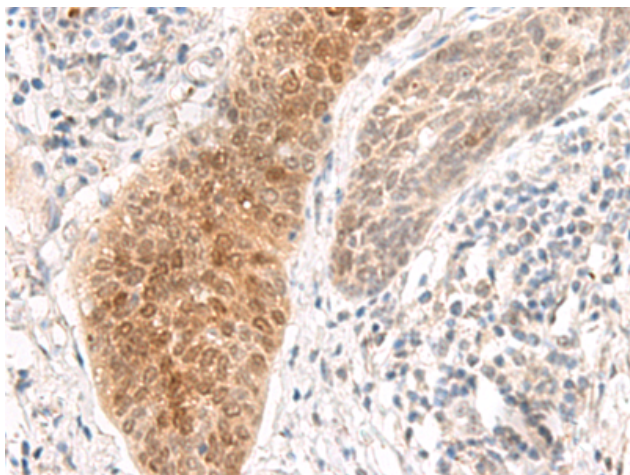
Purification: Antigen affinity purification

Species Reactivity: Human

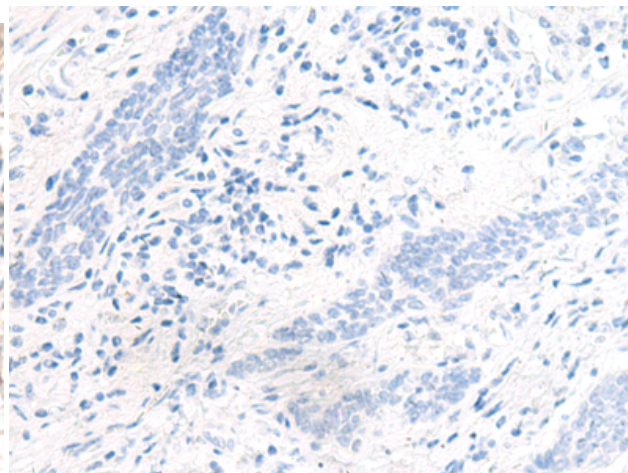
Constituents: PBS (without Mg²⁺ and Ca²⁺), pH 7.4, 150 mM NaCl, 0.05% Sodium Azide and 40% glycerol

Research Areas: Cell Biology

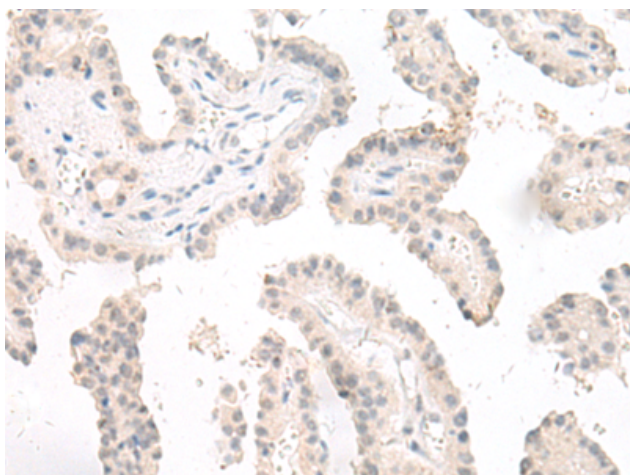
Storage & Shipping: Store at -20°C. Avoid repeated freezing and thawing



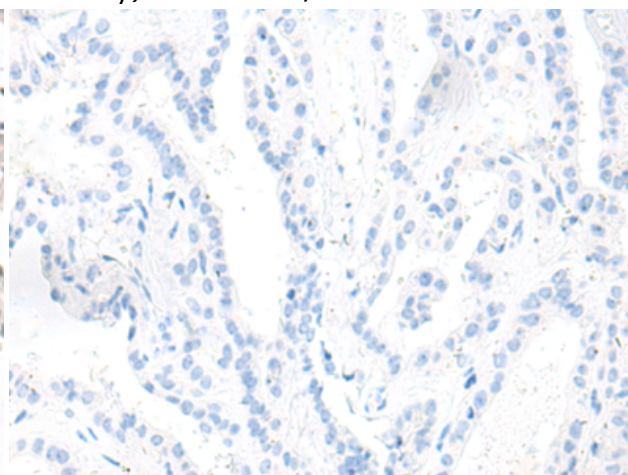
Immunohistochemistry analysis of paraffin embedded Human esophagus cancer tissue using 222079 (GHDC Antibody) at a dilution of 1/90 (Nucleus envelope).



In comparison with the IHC on the left, the same paraffin-embedded Human esophagus cancer tissue is first treated with the synthetic peptide and then with 222079 (Anti-GHDC Antibody) at dilution 1/90.



The image on the left is immunohistochemistry of paraffin-embedded Human thyroid cancer tissue using 222079 (Anti-GHDC Antibody) at a dilution of 1/90.



In comparison with the IHC on the left, the same paraffin-embedded Human thyroid cancer tissue is first treated with synthetic peptide and then with D263988 (Anti-GHDC Antibody) at dilution 1/90.