

## GFRA3 RABBIT PAB

**Cat.#:** S219819

**Product Name:** Anti-GFRA3 Rabbit Polyclonal Antibody

**Synonyms:** GDNFR3

**UNIPROT ID:** O60609 (Gene Accession - NP\_001487 )

**Background:** The protein encoded by this gene is a glycosylphosphatidylinositol(GPI)-linked cell surface receptor and a member of the GDNF receptor family. It forms a signaling receptor complex with RET tyrosine kinase receptor and binds the ligand, artemin.

**Immunogen:** Synthetic peptide of human GFRA3

**Applications:** ELISA, IHC

**Recommended Dilutions:** IHC: 50-200; ELISA: 500-1000

**Host Species:** Rabbit

**Clonality:** Rabbit Polyclonal

**Isotype:** Immunogen-specific rabbit IgG

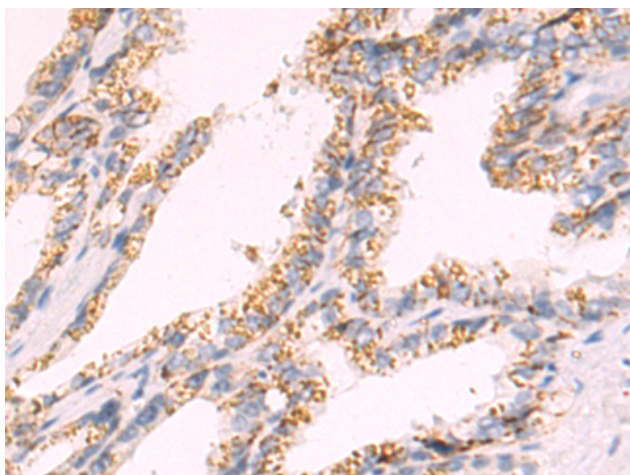
**Purification:** Antigen affinity purification

**Species Reactivity:** Human, Mouse

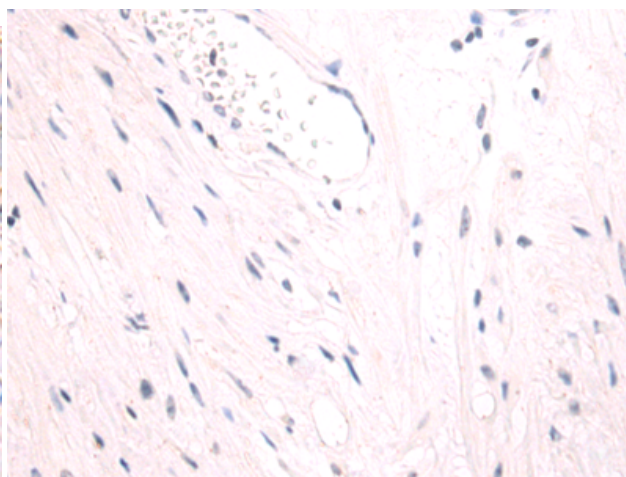
**Constituents:** PBS (without Mg<sup>2+</sup> and Ca<sup>2+</sup>), pH 7.4, 150 mM NaCl, 0.05% Sodium Azide and 40% glycerol

**Research Areas:** Neuroscience

**Storage & Shipping:** Store at -20°C. Avoid repeated freezing and thawing



Immunohistochemistry analysis of paraffin embedded Human prostate cancer tissue using 219819(GFRA3 Antibody) at a dilution of 1/50(Cytoplasm).



In comparison with the IHC on the left, the same paraffin-embedded Human prostate cancer tissue is first treated with the synthetic peptide and then with 219819(Anti-GFRA3 Antibody) at dilution 1/50.