

## GDF6 RABBIT PAB

**Cat.#:** N225076

**Product Name:** Anti-GDF6 Rabbit pAb

**Synonyms:** GDF6; GDF16; Growth/differentiation factor 6; GDF-6; Growth/differentiation factor 16

**UNIPROT ID:** Q6KF10

**Background:** Growth factor that controls proliferation and cellular differentiation in the retina and bone formation.

**Immunogen:** The antiserum was produced against synthesized peptide derived from the Internal region of human GDF6. AA range:311-360

**Applications:** WB,ELISA

**Recommended Dilutions:** WB: 1/500-1/1000 ELISA: 1/10000

**Host Species:** Rabbit

**Clonality:** Rabbit Polyclonal

**Clone ID:** -

**MW:** Calculated MW: 51 kDa; Observed MW: 51 kDa

**Isotype:** IgG

**Purification:** Affinity Purified

**Species Reactivity:** Human,Mouse,Rat

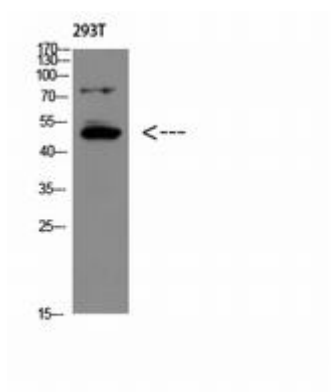
**Conjugation:** Unconjugated

**Modification:** Unmodified

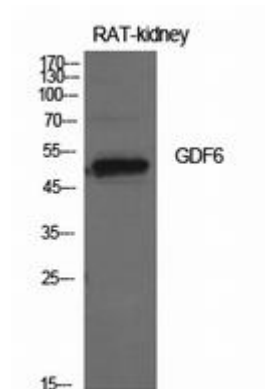
**Constituents:** PBS (without Mg<sup>2+</sup> and Ca<sup>2+</sup>), pH 7.3 containing 50% glycerol, 0.5% BSA and 0.02% sodium azide

**Research Areas:** Signal Transduction

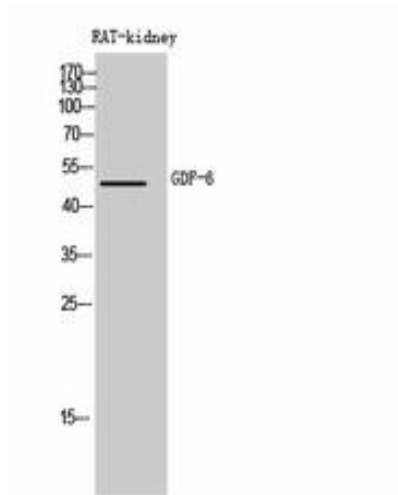
**Storage & Shipping:** Store at -20°C. Avoid repeated freezing and thawing



Western blot analysis of GDF6 in 293T lysates using GDF6 antibody.



Western blot analysis of GDF6 in rat kidney lysates using GDF6 antibody.



Western blot analysis of GDF6 in rat kidney lysates using GDF6 antibody.