

## GDF15 RABBIT PAB

**Cat.#:** N226009

**Product Name:** Anti-GDF15 Rabbit pAb

**Synonyms:** GDF15; MIC1; PDF; PLAB; PTGFB; Growth/differentiation factor 15; GDF-15; Macrophage inhibitory cytokine 1; MIC-1; NSAID-activated gene 1 protein; NAG-1; NSAID-regulated gene 1 protein; NRG-1; Placental TGF-beta; Placental bone morphogenetic

**UNIPROT ID:** Q99988

**Background:** Highly expressed in placenta, with lower levels in prostate and colon and some expression in kidney.

**Immunogen:** Recombinant protein of human GDF15

**Applications:** IP, WB

**Recommended Dilutions:** WB: 1/500-1/1000 IP: 1/20

**Host Species:** Rabbit

**Clonality:** Rabbit Polyclonal

**Clone ID:** -

**MW:** Calculated MW: 34 kDa; Observed MW: 35,13 kDa

**Isotype:** IgG

**Purification:** Affinity Purified

**Species Reactivity:** Human

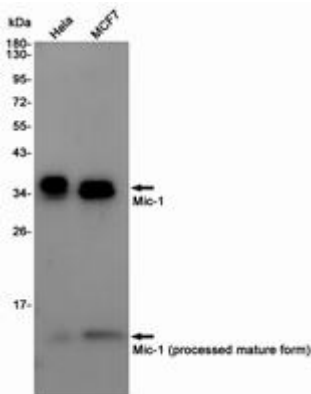
**Conjugation:** Unconjugated

**Modification:** Unmodified

**Constituents:** PBS (without Mg<sup>2+</sup> and Ca<sup>2+</sup>), pH 7.3 containing 50% glycerol, 0.5% BSA and 0.02% sodium azide

**Research Areas:** Cell Biology

**Storage & Shipping:** Store at -20°C. Avoid repeated freezing and thawing



Western blot analysis of GDF15/Mic1 in HeLa, MCF-7 lysates using GDF15 antibody.