

GCLC RABBIT PAB

Cat.#: S211955

Product Name: Anti-GCLC Rabbit Polyclonal Antibody

Synonyms: GCL; GCS; GLCL; GLCLC

UNIPROT ID: P48506 (Gene Accession - BC022487)

Background: Glutamate-cysteine ligase, also known as gamma-glutamylcysteine synthetase is the first rate-limiting enzyme of glutathione synthesis. The enzyme consists of two subunits, a heavy catalytic subunit and a light regulatory subunit. This locus encodes the catalytic subunit, while the regulatory subunit is derived from a different gene located on chromosome 1p22-p21. Mutations at this locus have been associated with hemolytic anemia due to deficiency of gamma-glutamylcysteine synthetase and susceptibility to myocardial infarction.

Immunogen: Fusion protein of human GCLC

Applications: ELISA, WB, IHC

Recommended Dilutions: IHC: 50-200;WB: 500-2000;ELISA: 5000-10000

Host Species: Rabbit

Clonality: Rabbit Polyclonal

Isotype: Immunogen-specific rabbit IgG

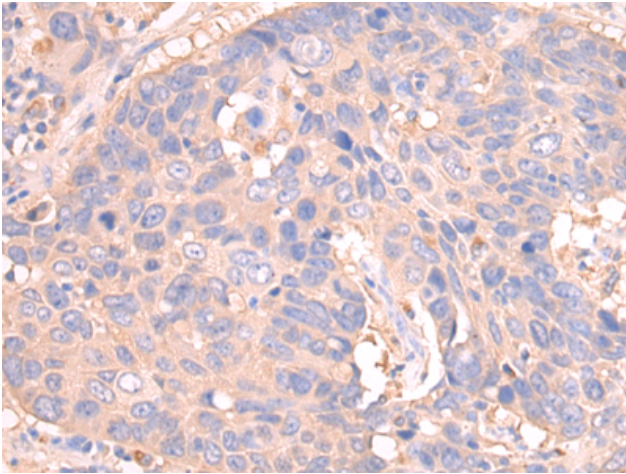
Purification: Antigen affinity purification

Species Reactivity: Human, Mouse, Rat

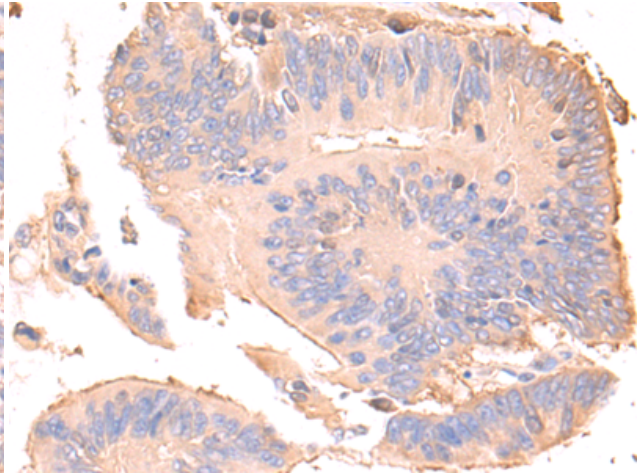
Constituents: PBS (without Mg²⁺ and Ca²⁺), pH 7.4, 150 mM NaCl, 0.05% Sodium Azide and 40% glycerol

Research Areas: Metabolism, Cell Biology

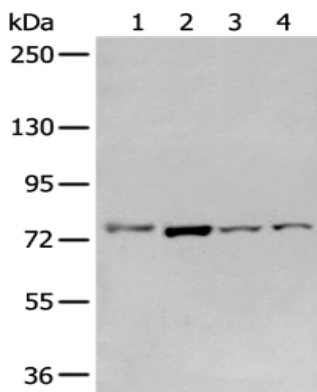
Storage & Shipping: Store at -20°C. Avoid repeated freezing and thawing



Immunohistochemistry analysis of paraffin-embedded Human lung cancer tissue using 211955(GCLC Antibody) at a dilution of 1/35(Cytoplasm).



Immunohistochemistry analysis of paraffin-embedded Human colorectal cancer tissue using 211955(Anti-GCLC Antibody) at a dilution of 1/35.



Gel: 6%SDS-PAGE, Lysate: 40 μ g;
Lane 1-4: Raw264.7, A549, Hepg2 and Jurkat cell lysates;
Primary antibody: 211955(GCLC Antibody) at dilution 1/800;
Secondary antibody: Goat anti rabbit IgG at 1/8000 dilution;
Exposure time: 30 seconds