

## GASK1A RABBIT PAB

**Cat.#:** S221805

**Product Name:** Anti-GASK1A Rabbit Polyclonal Antibody

**Synonyms:** C3orf41; FAM198A

**UNIPROT ID:** Q9UFP1 (Gene Accession - NP\_001123380 )

**Background:** The function of this protein remains unknown.

**Immunogen:** Synthetic peptide of human GASK1A

**Applications:** ELISA, IHC

**Recommended Dilutions:** IHC: 50-200; ELISA: 5000-10000

**Host Species:** Rabbit

**Clonality:** Rabbit Polyclonal

**Isotype:** Immunogen-specific rabbit IgG

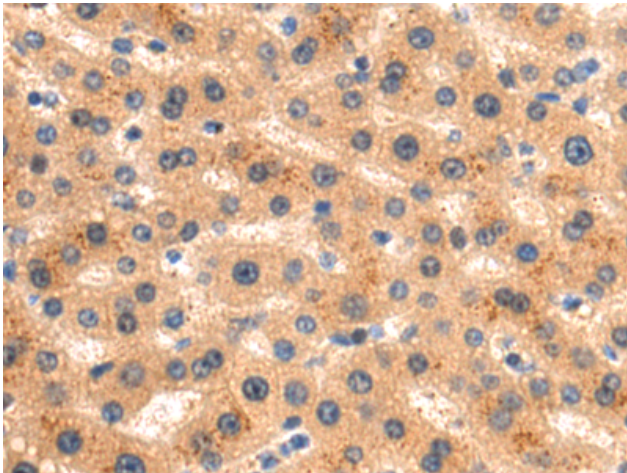
**Purification:** Antigen affinity purification

**Species Reactivity:** Human, Mouse

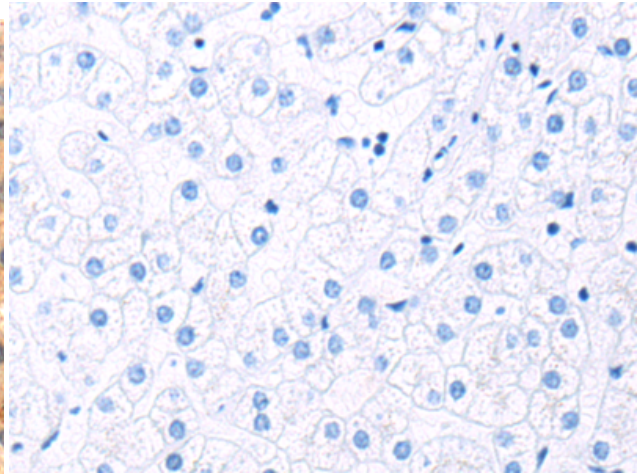
**Constituents:** PBS (without Mg<sup>2+</sup> and Ca<sup>2+</sup>), pH 7.4, 150 mM NaCl, 0.05% Sodium Azide and 40% glycerol

**Research Areas:** Cell Biology

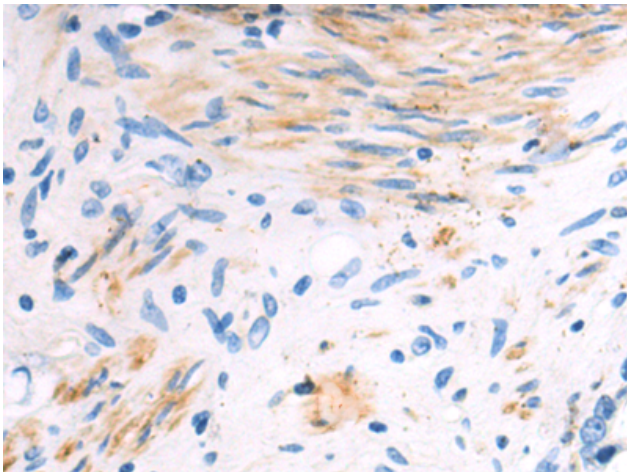
**Storage & Shipping:** Store at -20°C. Avoid repeated freezing and thawing



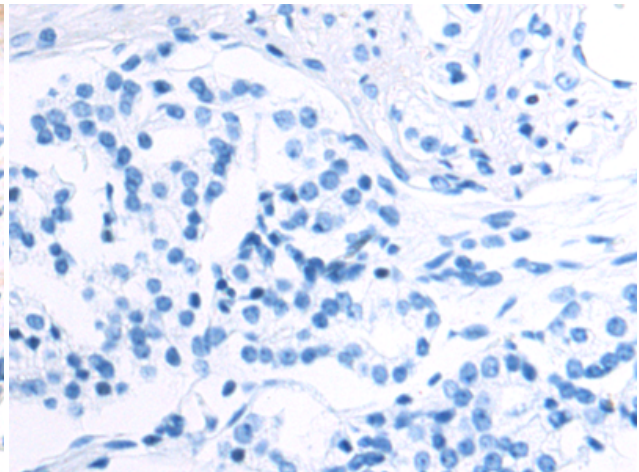
Immunohistochemistry analysis of paraffin embedded Human liver cancer tissue using 221805(GASK1A Antibody) at a dilution of 1/60(Cytoplasm).



In comparison with the IHC on the left, the same paraffin-embedded Human liver cancer tissue is first treated with the synthetic peptide and then with 221805(Anti-GASK1A Antibody) at dilution 1/60.



The image on the left is immunohistochemistry of paraffin-embedded Human prostate cancer tissue using 221805(Anti-GASK1A Antibody) at a dilution of 1/60.



In comparison with the IHC on the left, the same paraffin-embedded Human prostate cancer tissue is first treated with synthetic peptide and then with D263559(Anti-GASK1A Antibody) at dilution 1/60.