

## **GAS8 RABBIT PAB**

**Cat.#:** S220566

**Product Name:** Anti-GAS8 Rabbit Polyclonal Antibody

**Synonyms:** GAS11

**UNIPROT ID:** O95995 (Gene Accession - NP\_001472 )

**Background:** This gene includes 11 exons spanning 25 kb and maps to a region of chromosome 16 that is sometimes deleted in breast and prostate cancer. The second intron contains an apparently intronless gene, C16orf3, that is transcribed in the opposite orientation. This gene is a putative tumor suppressor gene. Several transcript variants encoding different isoforms have been found for this gene.

**Immunogen:** Synthetic peptide of human GAS8

**Applications:** ELISA, IHC

**Recommended Dilutions:** IHC: 25-100; ELISA: 1000-2000

**Host Species:** Rabbit

**Clonality:** Rabbit Polyclonal

**Isotype:** Immunogen-specific rabbit IgG

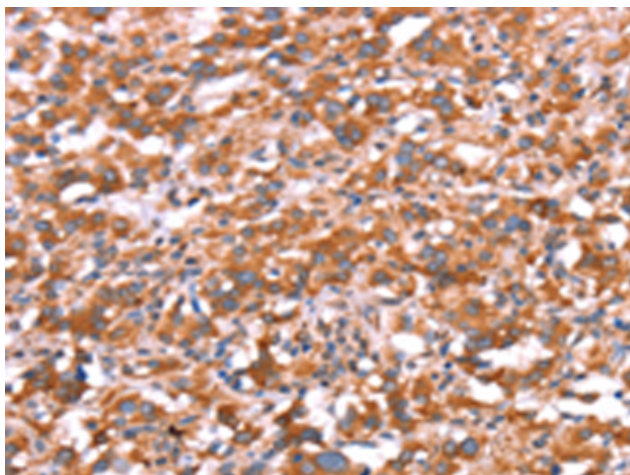
**Purification:** Antigen affinity purification

**Species Reactivity:** Human, Mouse, Rat

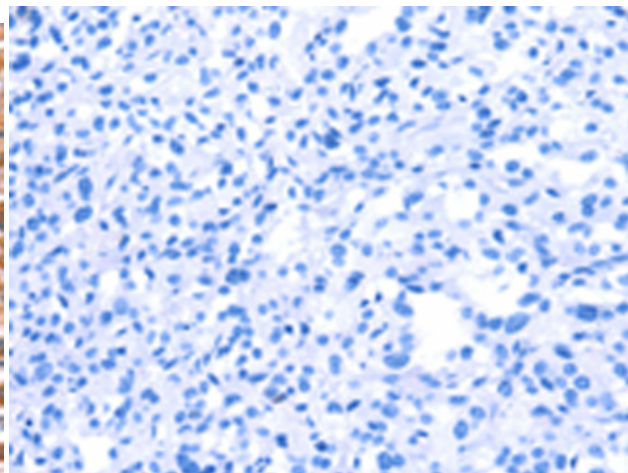
**Constituents:** PBS (without Mg<sup>2+</sup> and Ca<sup>2+</sup>), pH 7.4, 150 mM NaCl, 0.05% Sodium Azide and 40% glycerol

**Research Areas:** Signal Transduction, Cancer

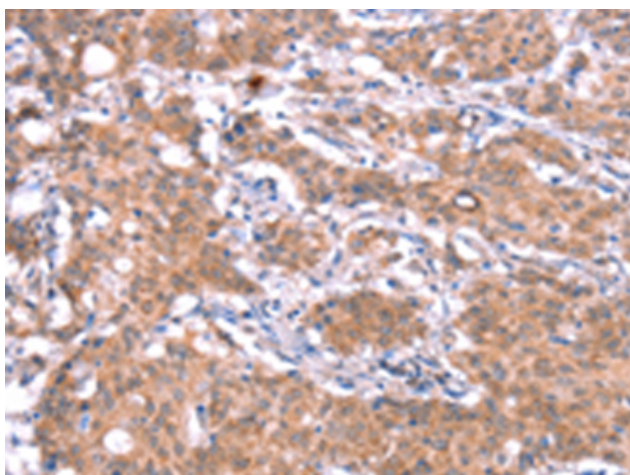
**Storage & Shipping:** Store at -20°C. Avoid repeated freezing and thawing



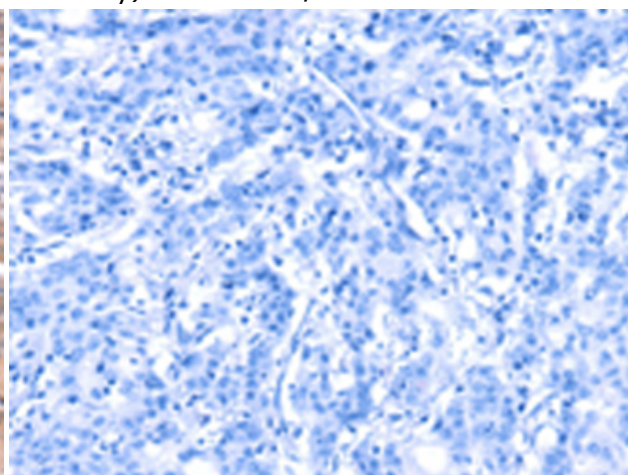
Immunohistochemistry analysis of paraffin embedded Human thyroid cancer tissue using 220566(GAS8 Antibody) at a dilution of 1/30(Cytoplasm).



In comparison with the IHC on the left, the same paraffin-embedded Human thyroid cancer tissue is first treated with the synthetic peptide and then with 220566(Anti-GAS8 Antibody) at dilution 1/30.



The image on the left is immunohistochemistry of paraffin-embedded Human gastric cancer tissue using 220566(Anti-GAS8 Antibody) at a dilution of 1/30.



In comparison with the IHC on the left, the same paraffin-embedded Human gastric cancer tissue is first treated with synthetic peptide and then with D261702(Anti-GAS8 Antibody) at dilution 1/30.