

GAP43 RABBIT PAB

Cat.#: S221420

Product Name: Anti-GAP43 Rabbit Polyclonal Antibody

Synonyms: B-50; PP46; GAP-43

UNIPROT ID: P17677 (Gene Accession - NP_002036)

Background: The protein encoded by this gene has been termed a 'growth' or 'plasticity' protein because it is expressed at high levels in neuronal growth cones during development and axonal regeneration. This protein is considered a crucial component of an effective regenerative response in the nervous system. Alternatively spliced transcript variants encoding distinct isoforms have been found for this gene. [provided by RefSeq, Jul 2008]

Immunogen: Synthetic peptide of human GAP43

Applications: ELISA, IHC

Recommended Dilutions: IHC: 50-200; ELISA: 5000-10000

Host Species: Rabbit

Clonality: Rabbit Polyclonal

Isotype: Immunogen-specific rabbit IgG

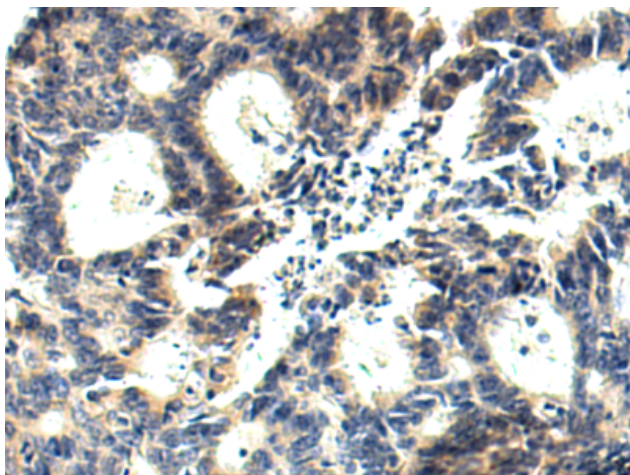
Purification: Antigen affinity purification

Species Reactivity: Human, Mouse, Rat

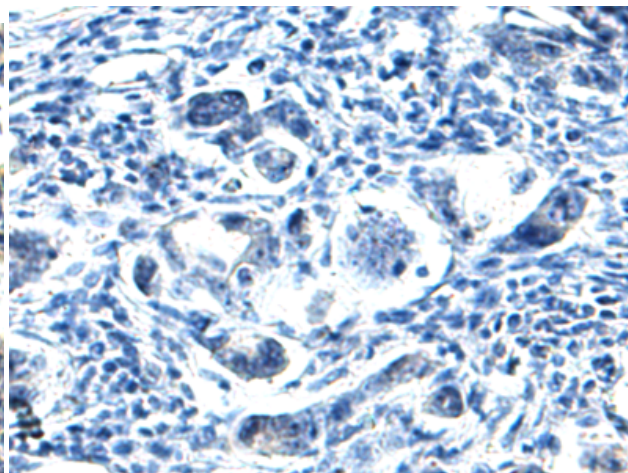
Constituents: PBS (without Mg²⁺ and Ca²⁺), pH 7.4, 150 mM NaCl, 0.05% Sodium Azide and 40% glycerol

Research Areas: Neuroscience

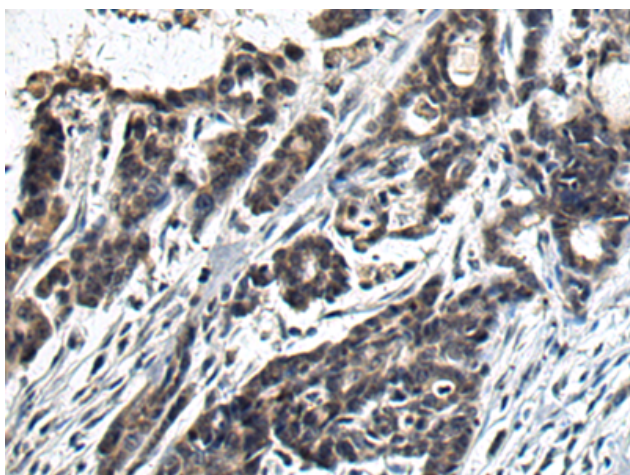
Storage & Shipping: Store at -20°C. Avoid repeated freezing and thawing



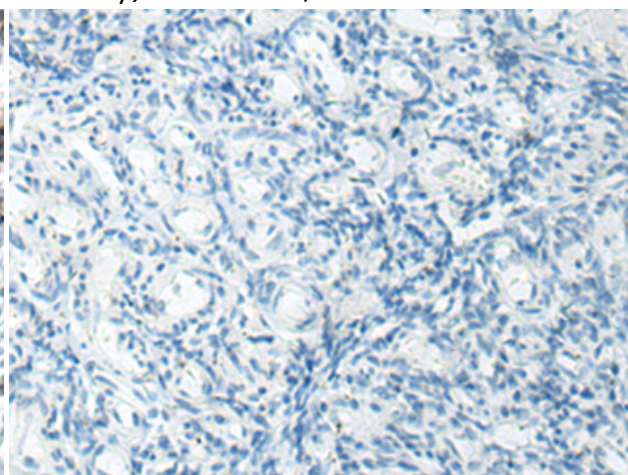
Immunohistochemistry analysis of paraffin embedded Human colorectal cancer tissue using 221420(GAP43 Antibody) at a dilution of 1/55(Cytoplasm).



In comparison with the IHC on the left, the same paraffin-embedded Human colorectal cancer tissue is first treated with the synthetic peptide and then with 221420(Anti-GAP43 Antibody) at dilution 1/55.



The image on the left is immunohistochemistry of paraffin-embedded Human ovarian cancer tissue using 221420(Anti-GAP43 Antibody) at a dilution of 1/55.



In comparison with the IHC on the left, the same paraffin-embedded Human ovarian cancer tissue is first treated with synthetic peptide and then with D263002(Anti-GAP43 Antibody) at dilution 1/55.