

GAMMA TUBULIN RABBIT MAB

Cat.#: N263341

Product Name: Anti-gamma Tubulin Rabbit Monoclonal Antibody

Synonyms: TUBG1; TUBG; Tubulin gamma-1 chain; Gamma-1-tubulin; Gamma-tubulin complex component 1; GCP-1

UNIPROT ID: P23258

Background: TUBG1 Tubulin is the major constituent of microtubules. Gamma tubulin is found at microtubule organizing centers (MTOC) such as the spindle poles or the centrosome. Pericentriolar matrix component that regulates alpha/beta tubulin minus-end nucleation, centrosome duplication and spindle formation. Interacts with GCP2 and GCP3. Interacts with B9D2. Interacts with CDK5RAP2;

Immunogen: Recombinant protein of human gamma Tubulin

Applications: WB, ICC/IF, IP

Recommended Dilutions: WB: 1/500-1/1000 IF: 1/50-1/200 IP: 1/20

Host Species: Rabbit

Clonality: Rabbit Monoclonal

Clone ID: R06-6A6

MW: Calculated MW: 51 kDa; Observed MW: 51 kDa

Isotype: IgG

Purification: Affinity Purified

Species Reactivity: Human, Mouse, Rat, Hamster

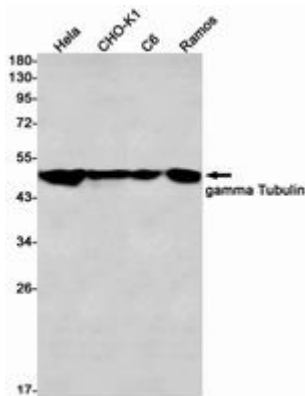
Conjugation: Unconjugated

Modification: Unmodified

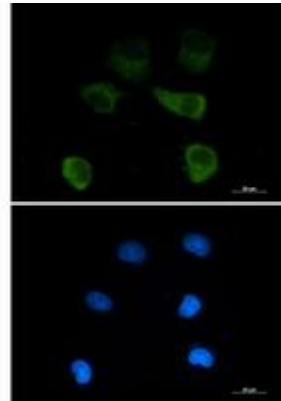
Constituents: PBS (without Mg²⁺ and Ca²⁺), pH 7.3 containing 50% glycerol, 0.5% BSA and 0.02% sodium azide

Research Areas: Signal Transduction

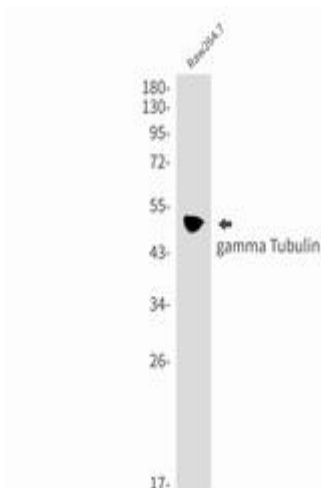
Storage & Shipping: Store at -20°C. Avoid repeated freezing and thawing



Western blot analysis of gamma Tubulin in Hela, CHO-K1, C6, Ramos lysates using gamma Tubulin antibody



Immunocytochemistry analysis of gamma Tubulin (green) in HEPG2 using gamma Tubulin antibody, and DAPI (blue).



Western blot analysis of gamma Tubulin in Raw264.7 lysates using gamma Tubulin antibody.