

GAMMA TUBULIN (6A10) MOUSE MAB

Cat.#: N261329

Product Name: Anti-gamma Tubulin (6A10) Mouse Monoclonal Antibody

Synonyms: TUBG1; TUBG; Tubulin gamma-1 chain; Gamma-1-tubulin; Gamma-tubulin complex component 1; GCP-1

UNIPROT ID: P23258

Background: TUBG1 Tubulin is the major constituent of microtubules. Gamma tubulin is found at microtubule organizing centers (MTOC) such as the spindle poles or the centrosome. Pericentriolar matrix component that regulates alpha/beta tubulin minus-end nucleation, centrosome duplication and spindle formation. Interacts with GCP2 and GCP3. Interacts with B9D2. Interacts with CDK5RAP2;

Immunogen: Synthetic peptide conjugated to KLH.

Applications: WB,IHC-P

Recommended Dilutions: WB: 1/500-1/1000 IHC: 1/50-1/100

Host Species: Mouse

Clonality: Mouse Monoclonal

Clone ID: 6A10-3A10-2A6

MW: Calculated MW: 51 kDa; Observed MW: 51 kDa

Isotype: IgG1

Purification: Affinity Purified

Species Reactivity: Human,Rat,Mouse

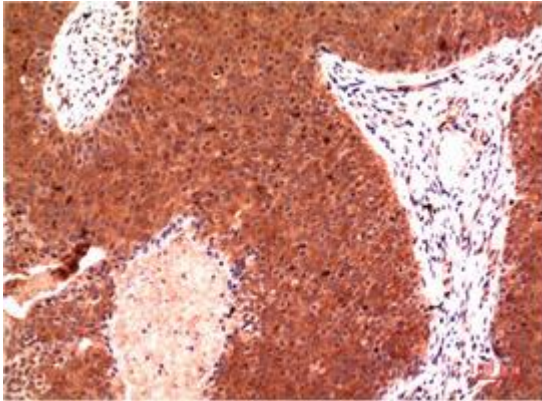
Conjugation: Unconjugated

Modification: Unmodified

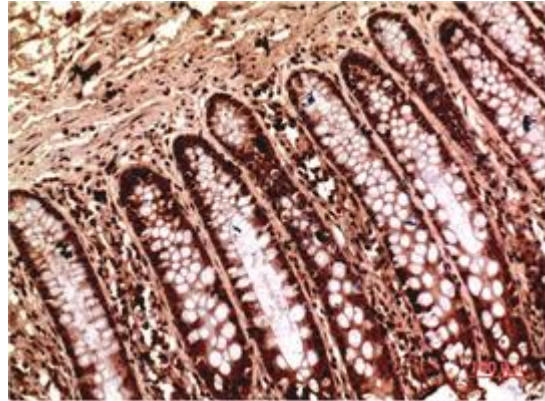
Constituents: PBS (without Mg²⁺ and Ca²⁺), pH 7.3 containing 50% glycerol, 0.5% BSA and 0.02% sodium azide

Research Areas: Signal Transduction

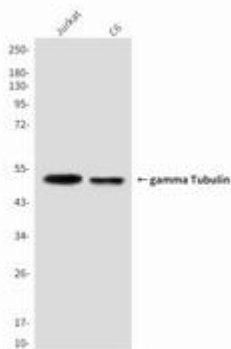
Storage & Shipping: Store at -20°C. Avoid repeated freezing and thawing



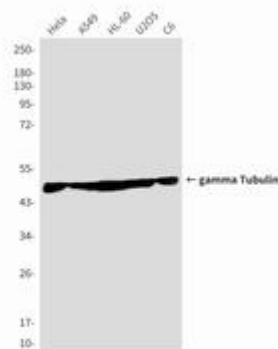
Immunohistochemical analysis of paraffin-embedded Human tonsils using gamma Tubulin (6A10) antibody. High-pressure and temperature Sodium Citrate pH 6.0 was used for antigen retrieval.



Immunohistochemistry analysis of paraffin-embedded Human Colon Carcinoma Tissue using gamma Tubulin (6A10) antibody. High-pressure and temperature Sodium Citrate pH 6.0 was used for antigen retrieval.



Western blot analysis of gamma Tubulin (6A10) in Jurkat, C6 lysates using gamma Tubulin (6A10) antibody



Western blot analysis of gamma Tubulin (6A10) in HeLa, A549, HL-60, U2OS, C6 lysates using gamma Tubulin (6A10) antibody.