

## GALECTIN 1 RABBIT MAB

**Cat.#:** N262255

**Product Name:** Anti-Galectin 1 Rabbit Monoclonal Antibody

**Synonyms:** LGALS1; Galectin-1; Gal-1; 14 kDa laminin-binding protein; HLBPI4; 14 kDa lectin; Beta-galactoside-binding lectin L-14-I; Galaptin; HBL; HPL; Lactose-binding lectin 1; Lectin galactoside-binding soluble 1; Putative MAPK-activating protein P

**UNIPROT ID:** P09382

**Background:** May regulate apoptosis, cell proliferation and cell differentiation. Binds beta-galactoside and a wide array of complex carbohydrates. Inhibits CD45 protein phosphatase activity and therefore the dephosphorylation of Lyn kinase.

**Immunogen:** A synthetic peptide of human Galectin 1

**Applications:** WB,IHC-P,IP

**Recommended Dilutions:** WB: 1/500-1/1000 IHC: 1/50-1/100 IP: 1/20

**Host Species:** Rabbit

**Clonality:** Rabbit Monoclonal

**Clone ID:** R01-7A5

**MW:** Calculated MW: 15 kDa; Observed MW: 15 kDa

**Isotype:** IgG

**Purification:** Affinity Purified

**Species Reactivity:** Human,Rat

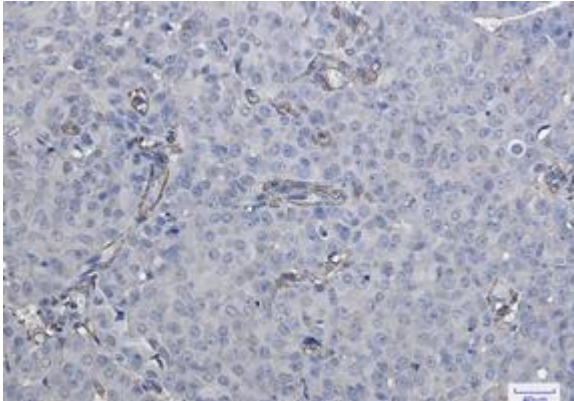
**Conjugation:** Unconjugated

**Modification:** Unmodified

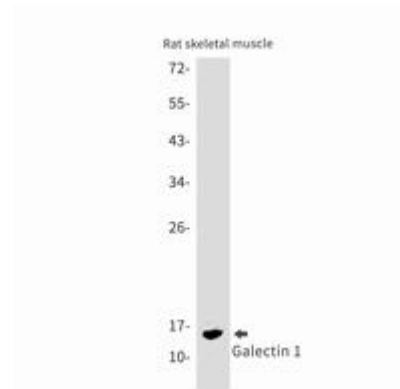
**Constituents:** PBS (without Mg<sup>2+</sup> and Ca<sup>2+</sup>), pH 7.3 containing 50% glycerol, 0.5% BSA and 0.02% sodium azide

**Research Areas:** Cell Biology

**Storage & Shipping:** Store at -20°C. Avoid repeated freezing and thawing



Immunohistochemistry analysis of paraffin-embedded Human breast cancer using Galectin 1 antibody. High-pressure and temperature Sodium Citrate pH 6.0 was used for antigen retrieval.



Western blot analysis of Galectin 1 in rat skeletal muscle lysates using Galectin 1 antibody.



Western blot analysis of Galectin 1 in HeLa lysates using Galectin 1 antibody.