

GALECTIN 1 RABBIT MAB

Cat.#: N263338

Product Name: Anti-Galectin 1 Rabbit Monoclonal Antibody

Synonyms: LGALS1; Galectin-1; Gal-1; 14 kDa laminin-binding protein; HLBP14; 14 kDa lectin; Beta-galactoside-binding lectin L-14-I; Galaptin; HBL; HPL; Lactose-binding lectin 1; Lectin galactoside-binding soluble 1; Putative MAPK-activating protein P

UNIPROT ID: P09382

Background: May regulate apoptosis, cell proliferation and cell differentiation. Binds beta-galactoside and a wide array of complex carbohydrates. Inhibits CD45 protein phosphatase activity and therefore the dephosphorylation of Lyn kinase.

Immunogen: A synthetic peptide of human Galectin 1

Applications: WB,IP

Recommended Dilutions: WB: 1/500-1/1000 IP: 1/20

Host Species: Rabbit

Clonality: Rabbit Monoclonal

Clone ID: R04-0C8

MW: Calculated MW: 15 kDa; Observed MW: 15 kDa

Isotype: IgG

Purification: Affinity Purified

Species Reactivity: Mouse,Rat,Hamster

Conjugation: Unconjugated

Modification: Unmodified

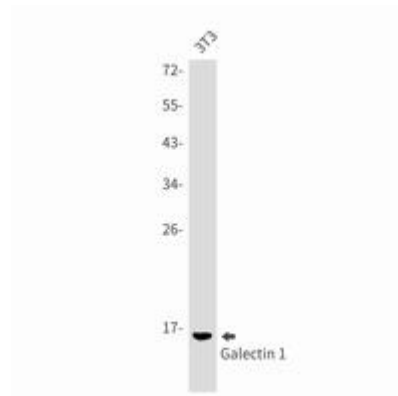
Constituents: PBS (without Mg²⁺ and Ca²⁺), pH 7.3 containing 50% glycerol, 0.5% BSA and 0.02% sodium azide

Research Areas: Cell Biology

Storage & Shipping: Store at -20°C. Avoid repeated freezing and thawing



Western blot analysis of Galectin 1 in CHO-K1, C6 lysates using Galectin 1 antibody.



Western blot analysis of Galectin 1 in 3T3 lysates using Galectin 1 antibody.