

FZD10 RABBIT PAB

Cat.#: S220252

Product Name: Anti-FZD10 Rabbit Polyclonal Antibody

Synonyms: Fz10; FzE7; CD350; FZ-10; hFz10

UNIPROT ID: Q9ULW2 (Gene Accession - NP_009128)

Background: This gene is a member of the frizzled gene family. Members of this family encode 7-transmembrane domain proteins that are receptors for the Wingless type MMTV integration site family of signaling proteins. Most frizzled receptors are coupled to the beta-catenin canonical signaling pathway. Using array analysis, expression of this intronless gene is significantly up-regulated in two cases of primary colon cancer.

Immunogen: Synthetic peptide of human FZD10

Applications: ELISA, IHC

Recommended Dilutions: IHC: 50-200; ELISA: 2000-10000

Host Species: Rabbit

Clonality: Rabbit Polyclonal

Isotype: Immunogen-specific rabbit IgG

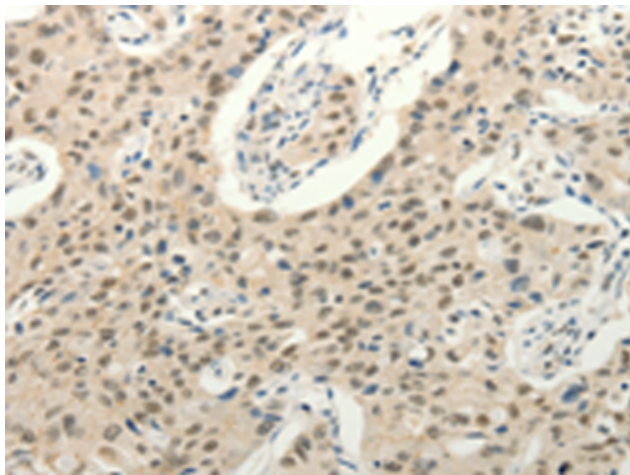
Purification: Antigen affinity purification

Species Reactivity: Human, Mouse

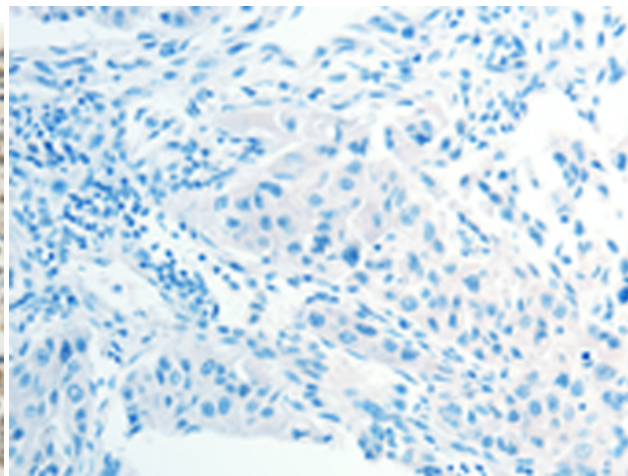
Constituents: PBS (without Mg²⁺ and Ca²⁺), pH 7.4, 150 mM NaCl, 0.05% Sodium Azide and 40% glycerol

Research Areas: Signal Transduction, Epigenetics and Nuclear Signaling

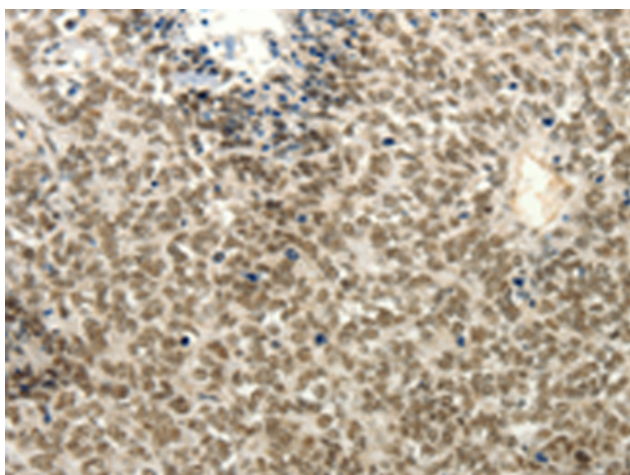
Storage & Shipping: Store at -20°C. Avoid repeated freezing and thawing



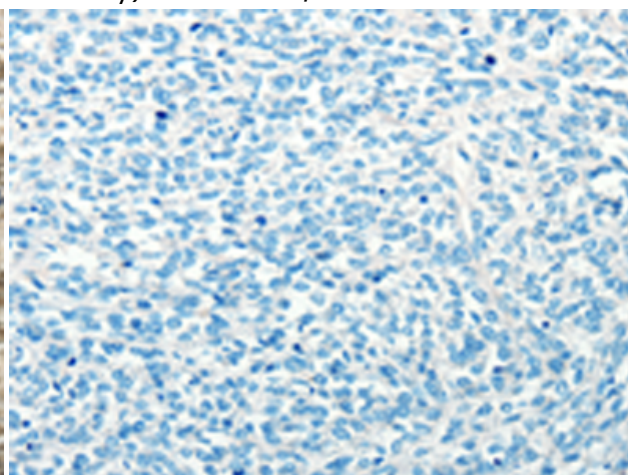
Immunohistochemistry analysis of paraffin embedded Human lung cancer tissue using 220252(FZD10 Antibody) at a dilution of 1/50(Nucleus).



In comparison with the IHC on the left, the same paraffin-embedded Human lung cancer tissue is first treated with the synthetic peptide and then with 220252(Anti-FZD10 Antibody) at dilution 1/50.



The image on the left is immunohistochemistry of paraffin-embedded Human ovarian cancer tissue using 220252(Anti-FZD10 Antibody) at a dilution of 1/50.



In comparison with the IHC on the left, the same paraffin-embedded Human ovarian cancer tissue is first treated with synthetic peptide and then with D261207(Anti-FZD10 Antibody) at dilution 1/50.