

FYCO1 RABBIT PAB

Cat.#: S219292

Product Name: Anti-FYCO1 Rabbit Polyclonal Antibody

Synonyms: CATC2; RUFY3; ZFYVE7; CTRCT18

UNIPROT ID: Q9BQS8 (Gene Accession - BC007218)

Background: This gene encodes a protein that contains a RUN domain, FYVE-type zinc finger domain and Golgi dynamics (GOLD) domain. The encoded protein plays a role in microtubule plus end-directed transport of autophagic vesicles through interactions with the small GTPase Rab7, phosphatidylinositol-3-phosphate (PI3P) and the autophagosome marker LC3. Mutations in this gene are a cause of autosomal recessive congenital cataract-2 (CATC2).

Immunogen: Fusion protein of human FYCO1

Applications: ELISA, IHC

Recommended Dilutions: IHC: 100-200; ELISA: 5000-10000

Host Species: Rabbit

Clonality: Rabbit Polyclonal

Isotype: Immunogen-specific rabbit IgG

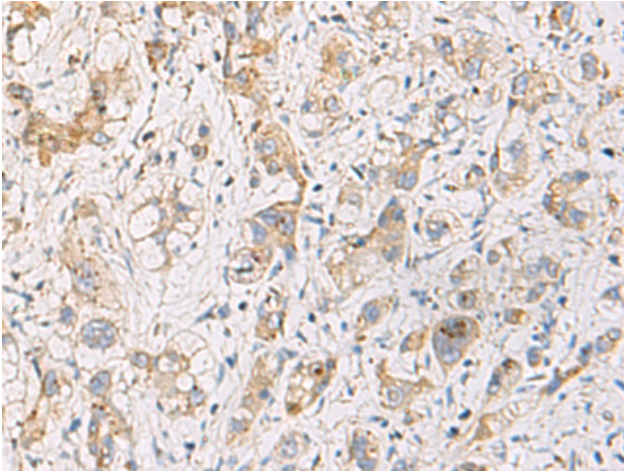
Purification: Antigen affinity purification

Species Reactivity: Human

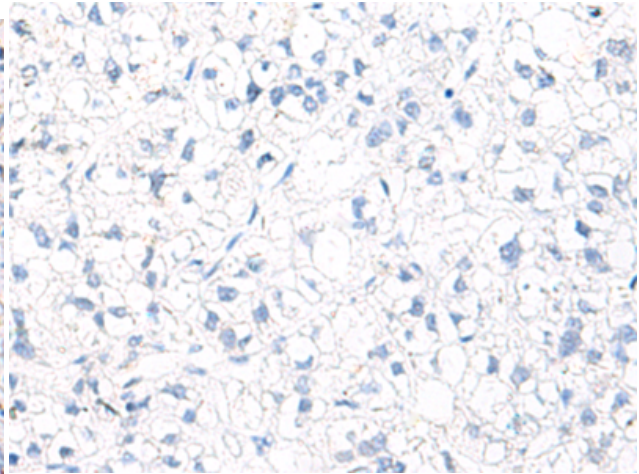
Constituents: PBS (without Mg²⁺ and Ca²⁺), pH 7.4, 150 mM NaCl, 0.05% Sodium Azide and 40% glycerol

Research Areas: Epigenetics and Nuclear Signaling

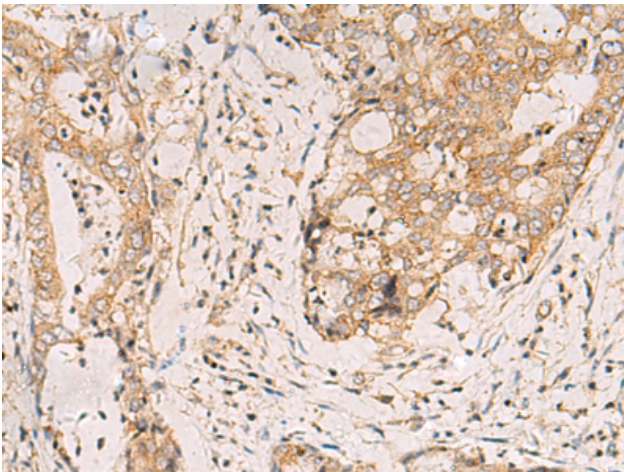
Storage & Shipping: Store at -20°C. Avoid repeated freezing and thawing



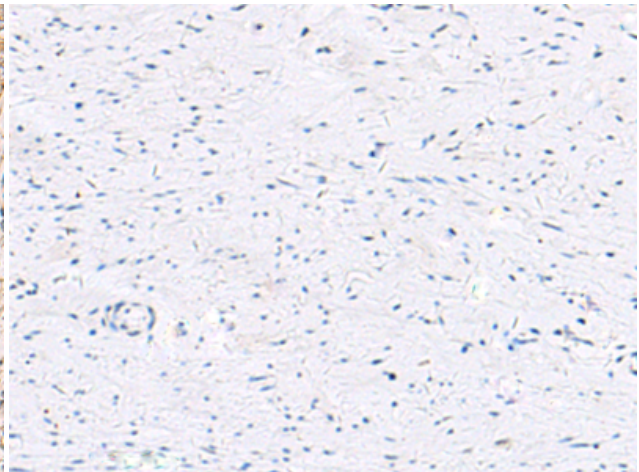
Immunohistochemistry analysis of paraffin embedded Human liver cancer tissue using 219292(FYCO1 Antibody) at a dilution of 1/110(Cytoplasm).



In comparison with the IHC on the left, the same paraffin-embedded Human liver cancer tissue is first treated with the fusion protein and then with 219292(Anti-FYCO1 Antibody) at dilution 1/110.



The image on the left is immunohistochemistry of paraffin-embedded Human cervical cancer tissue using 219292(Anti-FYCO1 Antibody) at a dilution of 1/110.



In comparison with the IHC on the left, the same paraffin-embedded Human cervical cancer tissue is first treated with fusion protein and then with D226224(Anti-FYCO1 Antibody) at dilution 1/110.