

## FXR1 RABBIT MAB

**Cat.#:** N263337

**Product Name:** Anti-FXR1 Rabbit Monoclonal Antibody

**Synonyms:** FXR1; FXR1P; hFXR1p

**UNIPROT ID:** P51114

**Background:** RNA-binding protein required for embryonic and postnatal development of muscle tissue. May regulate intracellular transport and local translation of certain mRNAs.

**Immunogen:** A synthetic peptide of human FXR1

**Applications:** WB,IHC-F,IHC-P,ICC/IF

**Recommended Dilutions:** WB: 1/500-1/1000 IHC: 1/50-1/100 IF: 1/50-1/200

**Host Species:** Rabbit

**Clonality:** Rabbit Monoclonal

**Clone ID:** R03-011

**MW:** Calculated MW: 70 kDa; Observed MW: 70-80,82-84 kDa

**Isotype:** IgG

**Purification:** Affinity Purified

**Species Reactivity:** Human,Mouse,Rat

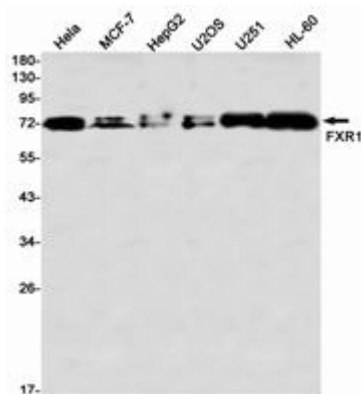
**Conjugation:** Unconjugated

**Modification:** Unmodified

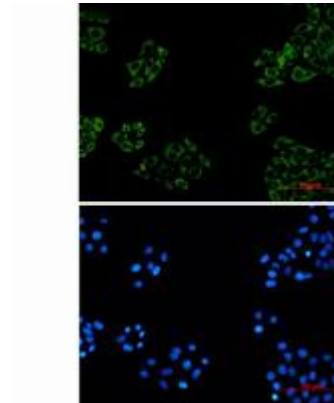
**Constituents:** PBS (without Mg<sup>2+</sup> and Ca<sup>2+</sup>), pH 7.3 containing 50% glycerol, 0.5% BSA and 0.02% sodium azide

**Research Areas:** Immunology

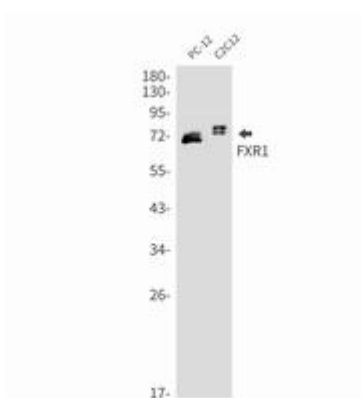
**Storage & Shipping:** Store at -20°C. Avoid repeated freezing and thawing



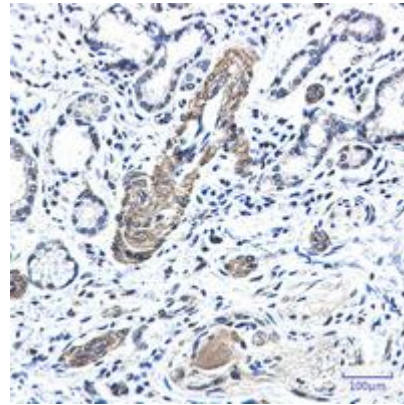
Western blot analysis of FXR1 in HeLa, MCF-7, HepG2, U2OS, U251, HL-60 lysates using FXR1 antibody



Immunocytochemistry analysis of FXR1 (green) in HeLa using FXR1 antibody, and DAPI (blue).



Western blot analysis of FXR1 in PC-12, C2C12 lysates using FXR1 antibody.



Immunohistochemistry analysis of paraffin-embedded Human lung cancer using FXR1 antibody. High-pressure and temperature Sodium Citrate pH 6.0 was used for antigen retrieval.