

## FUT1 RABBIT PAB

**Cat.#:** S220559

**Product Name:** Anti-FUT1 Rabbit Polyclonal Antibody

**Synonyms:** H; HH; HSC

**UNIPROT ID:** P19526 (Gene Accession - NP\_000139 )

**Background:** This gene encodes a Golgi stack membrane protein that is involved in the creation of a precursor of the H antigen, which is required for the final step in the synthesis of soluble A and B antigens. This is one of two genes encoding the galactoside 2-L-fucosyltransferase enzyme. Mutations in this gene are a cause of the H-Bombay blood group.

**Immunogen:** Synthetic peptide of human FUT1

**Applications:** ELISA, WB, IHC

**Recommended Dilutions:** IHC: 50-100;WB: 500-2000;ELISA: 5000-10000

**Host Species:** Rabbit

**Clonality:** Rabbit Polyclonal

**Isotype:** Immunogen-specific rabbit IgG

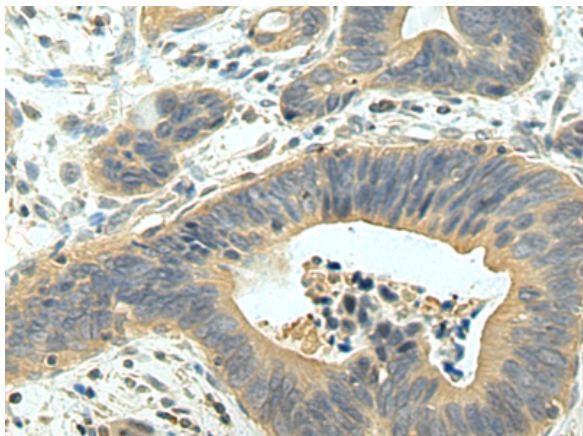
**Purification:** Antigen affinity purification

**Species Reactivity:** Human

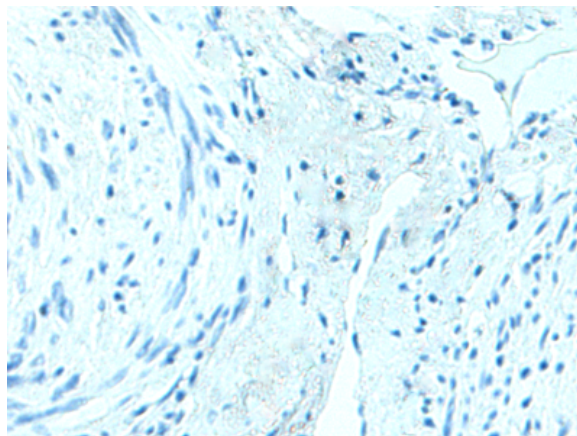
**Constituents:** PBS (without Mg<sup>2+</sup> and Ca<sup>2+</sup>), pH 7.4, 150 mM NaCl, 0.05% Sodium Azide and 40% glycerol

**Research Areas:** Cardiovascular

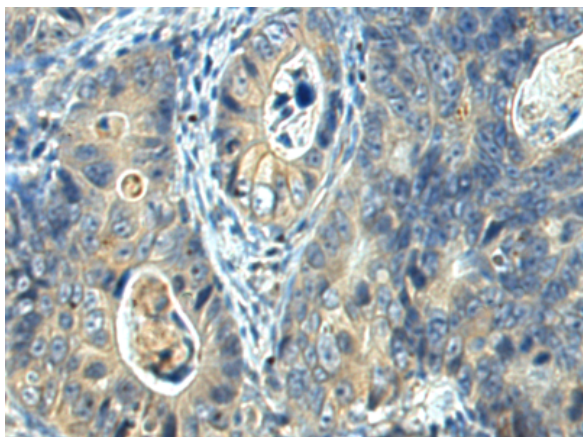
**Storage & Shipping:** Store at -20°C. Avoid repeated freezing and thawing



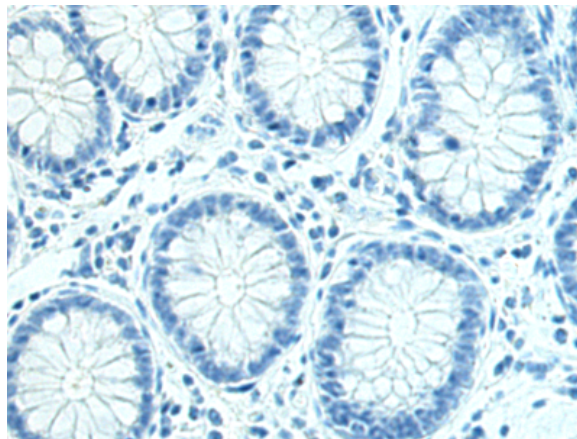
Immunohistochemistry analysis of paraffin embedded Human cervical cancer tissue using 220559(FUT1 Antibody) at a dilution of 1/35(Cytoplasm).



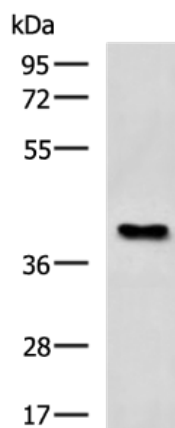
In comparison with the IHC on the left, the same paraffin-embedded Human cervical cancer tissue is first treated with the synthetic peptide and then with 220559(Anti-FUT1 Antibody) at dilution 1/35.



The image on the left is immunohistochemistry of paraffin-embedded Human colorectal cancer tissue using 220559(Anti-FUT1 Antibody) at a dilution of 1/35.



In comparison with the IHC on the left, the same paraffin-embedded Human colorectal cancer tissue is first treated with synthetic peptide and then with D261692(Anti-FUT1 Antibody) at dilution 1/35.



Gel: 8%SDS-PAGE, Lysate: 40 µg;  
Lane: Raji cell lysate;  
Primary antibody: 220559(FUT1 Antibody) at dilution 1/800;  
Secondary antibody: HRP-conjugated Goat anti rabbit IgG at 1/5000 dilution;  
Exposure time: 1 minute



# Product Description

Pioneering GTPase and Oncogene Product Development since 2010

---