

FSTL1 RABBIT PAB

Cat.#: S217457

Product Name: Anti-FSTL1 Rabbit Polyclonal Antibody

Synonyms: FRP; FSL1; OCC1; OCC-1; tsc36; MIR198

UNIPROT ID: Q12841 (Gene Accession - BC000055)

Background: This gene encodes a protein with similarity to follistatin, an activin-binding protein. It contains an FS module, a follistatin-like sequence containing 10 conserved cysteine residues. This gene product is thought to be an autoantigen associated with rheumatoid arthritis. [provided by RefSeq, Jul 2008]

Immunogen: Fusion protein of human FSTL1

Applications: ELISA, IHC

Recommended Dilutions: IHC: 50-200; ELISA: 5000-10000

Host Species: Rabbit

Clonality: Rabbit Polyclonal

Isotype: Immunogen-specific rabbit IgG

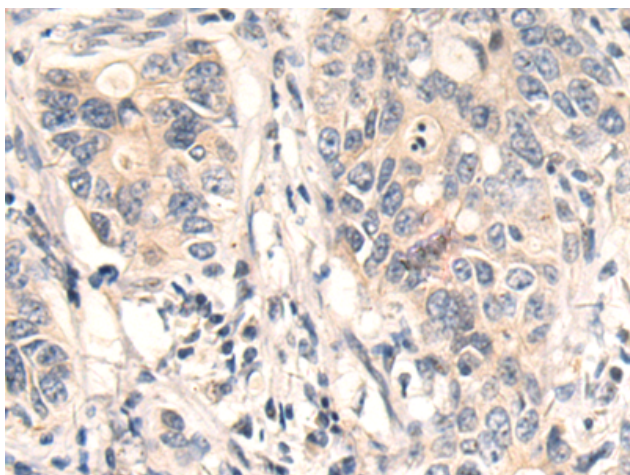
Purification: Antigen affinity purification

Species Reactivity: Human, Mouse, Rat

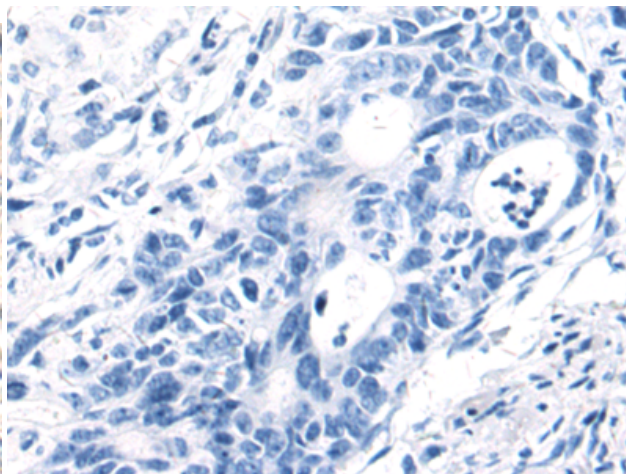
Constituents: PBS (without Mg²⁺ and Ca²⁺), pH 7.4, 150 mM NaCl, 0.05% Sodium Azide and 40% glycerol

Research Areas: Cancer, Cardiovascular

Storage & Shipping: Store at -20°C. Avoid repeated freezing and thawing



Immunohistochemistry analysis of paraffin embedded Human gastric cancer tissue using 217457(FSTL1 Antibody) at a dilution of 1/80(Cytoplasm).



In comparison with the IHC on the left, the same paraffin-embedded Human gastric cancer tissue is first treated with the fusion protein and then with 217457(Anti-FSTL1 Antibody) at dilution 1/80.