

## FSHR RABBIT PAB

**Cat.#:** N225365

**Product Name:** Anti-FSHR Rabbit pAb

**Synonyms:** FSHR; LGR1; Follicle-stimulating hormone receptor; FSH-R; Follitropin receptor

**UNIPROT ID:** P23945

**Background:** The protein encoded by this gene belongs to family 1 of G-protein coupled receptors. It is the receptor for follicle stimulating hormone and functions in gonad development. Mutations in this gene cause ovarian dysgenesis type 1, and also ovarian hyperstimulation syndrome. Alternative splicing results in multiple transcript variants.

**Immunogen:** KLH coupled human protein peptide 120-200 Interacts with ARRB2.

**Applications:** WB, ICC/IF, ELISA

**Recommended Dilutions:** WB: 1/500-1/1000 IF: 1/50-1/200 ELISA: 1/10000

**Host Species:** Rabbit

**Clonality:** Rabbit Polyclonal

**Clone ID:** -

**MW:** Calculated MW: 78 kDa; Observed MW: 78 kDa

**Isotype:** IgG

**Purification:** Affinity Purified

**Species Reactivity:** Human, Mouse, Rat

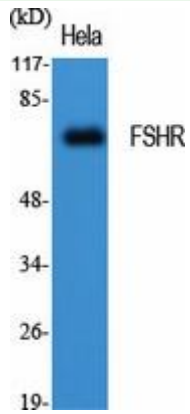
**Conjugation:** Unconjugated

**Modification:** Unmodified

**Constituents:** PBS (without Mg<sup>2+</sup> and Ca<sup>2+</sup>), pH 7.3 containing 50% glycerol, 0.5% BSA and 0.02% sodium azide

**Research Areas:** Neuroscience

**Storage & Shipping:** Store at -20°C. Avoid repeated freezing and thawing



Western blot analysis of FSHR in HeLa lysates using FSHR antibody.