

FRS2 RABBIT PAB

Cat.#: N225844

Product Name: Anti-FRS2 Rabbit pAb

Synonyms: Fibroblast growth factor receptor substrate 2; FGFR substrate 2; FGFR-signaling adaptor SNT; Src1-associated neurotrophic factor target 1; SNT-1

UNIPROT ID: Q8WU20

Background: Adapter protein that links FGR and NGF receptors to downstream signaling pathways. Involved in the activation of MAP kinases. Modulates signaling via SHC1 by competing for a common binding site on NTRK1.

Immunogen: A synthesized peptide derived from human FRS2

Applications: WB,IP,FC

Recommended Dilutions: WB: 1/500-1/1000 IP: 1/20 FC: 1/50-1/100

Host Species: Rabbit

Clonality: Rabbit Polyclonal

Clone ID: -

MW: Calculated MW: 57 kDa; Observed MW: 57 kDa

Isotype: IgG

Purification: Affinity Chromatography

Species Reactivity: Human

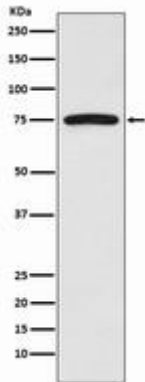
Conjugation: Unconjugated

Modification: Unmodified

Constituents: PBS (without Mg²⁺ and Ca²⁺), pH 7.3 containing 50% glycerol, 0.5% BSA and 0.02% sodium azide

Research Areas: Signal Transduction

Storage & Shipping: Store at -20°C. Avoid repeated freezing and thawing



Western blot analysis of FRS2 in HeLa lysates using FRS2 antibody.