

FRAT1 RABBIT MAB

Cat.#: N262240

Product Name: Anti-FRAT1 Rabbit Monoclonal Antibody

Synonyms: FRAT-1

UNIPROT ID: Q92837

Background: Positively regulates the Wnt signaling pathway by stabilizing beta-catenin through the association with GSK-3. May play a role in tumor progression and collaborate with PIM1 and MYC in lymphomagenesis.

Immunogen: A synthetic peptide of human FRAT1

Applications: WB, ICC/IF, IP

Recommended Dilutions: WB: 1/500-1/1000 IF: 1/50-1/200 IP: 1/20

Host Species: Rabbit

Clonality: Rabbit Monoclonal

Clone ID: R09-6H1

MW: Calculated MW: 29 kDa; Observed MW: 29 kDa

Isotype: IgG

Purification: Affinity Purified

Species Reactivity: Human

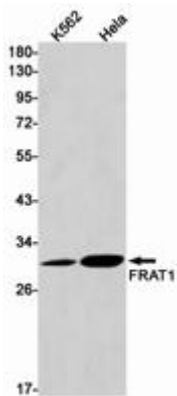
Conjugation: Unconjugated

Modification: Unmodified

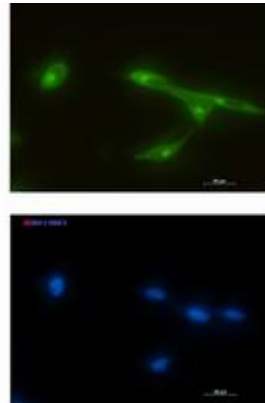
Constituents: PBS (without Mg²⁺ and Ca²⁺), pH 7.3 containing 50% glycerol, 0.5% BSA and 0.02% sodium azide

Research Areas: Immunology

Storage & Shipping: Store at -20°C. Avoid repeated freezing and thawing



Western blot analysis of FRAT1 in K562, HeLa lysates using FRAT1 antibody.



Immunocytochemistry analysis of FRAT1 (green) in LNcap using FRAT1 antibody, and DAPI (blue).