

## FRAGILIS RABBIT MAB

**Cat.#:** N262239

**Product Name:** Anti-Fragilis Rabbit Monoclonal Antibody

**Synonyms:** IFITM3; Interferon-induced transmembrane protein 3; Dispanin subfamily A member 2b; DSPA2b; Interferon-inducible protein 1-8U

**UNIPROT ID:** Q01628

**Background:** IFN-induced antiviral protein that mediates cellular innate immunity to at least three major human pathogens, namely influenza A H1N1 virus, West Nile virus (WNV), and dengue virus (WNV), by inhibiting the early step(s) of replication.

**Immunogen:** A synthetic peptide of human Fragilis

**Applications:** WB,IHC-F,IHC-P,ICC/IF

**Recommended Dilutions:** WB: 1/500-1/1000 IHC: 1/50-1/100 IF: 1/50-1/200

**Host Species:** Rabbit

**Clonality:** Rabbit Monoclonal

**Clone ID:** R09-615

**MW:** Calculated MW: 15 kDa; Observed MW: 15 kDa

**Isotype:** IgG

**Purification:** Affinity Purified

**Species Reactivity:** Human

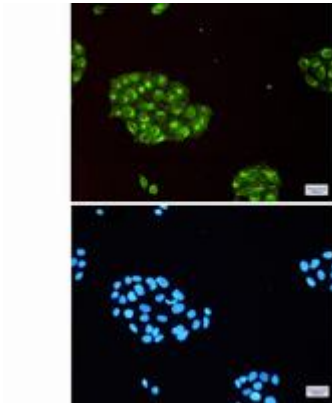
**Conjugation:** Unconjugated

**Modification:** Unmodified

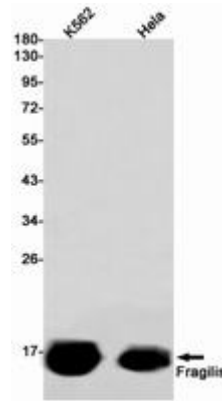
**Constituents:** PBS (without Mg<sup>2+</sup> and Ca<sup>2+</sup>), pH 7.3 containing 50% glycerol, 0.5% BSA and 0.02% sodium azide

**Research Areas:** Stem Cells

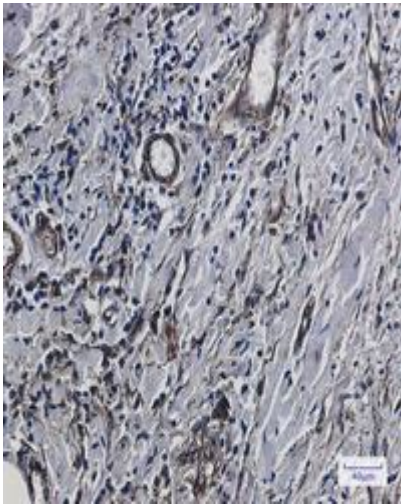
**Storage & Shipping:** Store at -20°C. Avoid repeated freezing and thawing



Immunocytochemistry analysis of Fragilis (green) in HeLa using Fragilis antibody, and DAPI (blue)



Western blot analysis of Fragilis in K562, HeLa lysates using Fragilis antibody.



Immunohistochemistry analysis of paraffin-embedded Human breast cancer using Fragilis antibody. High-pressure and temperature Sodium Citrate pH 6.0 was used for antigen retrieval.