

CX3CR1 RABBIT PAB

Cat.#: N225026

Product Name: Anti-CX3CR1 Rabbit pAb

Synonyms: CX3CR1; CMKBRL1; GPR13; CX3C chemokine receptor 1; C-X3-C
CKR-1; CX3CR1; Beta chemokine receptor-like 1; CMK-BRL-1; CMK-BRL1;
Fractalkine receptor; G-protein coupled receptor 13; V28

UNIPROT ID: P49238

Background: CX3C motif chemokine receptor 1 (CX3CR1) is known as the fractalkine receptor or G-protein coupled receptor 13 (GPR13). It is a transmembrane protein of the G protein-coupled receptor 1 (GPCR1) family. The receptor binds the inflammatory chemokine CX3CL1 (also called neurotactin in mice or fractalkine in humans). This endogenous ligand solely binds to CX3CR1 receptor. Interaction of CX3CR1 with CX3CL1 can mediate migration, adhesion and retention of leukocytes, because Fractalkine exists as membrane-anchored protein (mCX3CL1) as well as cleaved soluble molecule (sCX3CL1) due to proteolysis by metalloproteinases (MPPs). The shredded form carries out typical function of conventional chemokines, the chemotaxis, while the membrane-bound protein behaves as adhesion molecule for facilitation of diapedesis.

Immunogen: Synthesized peptide derived from CX3CR1 at AA range: 120-200

Applications: WB,IHC-P,ELISA

Recommended Dilutions: WB: 1/500-1/1000 IHC: 1/50-1/100 ELISA: 1/10000

Host Species: Rabbit

Clonality: Rabbit Polyclonal

Clone ID: -

MW: Calculated MW: 40 kDa; Observed MW: 40 kDa

Isotype: IgG

Purification: Affinity Purified

Species Reactivity: Human,Mouse,Rat

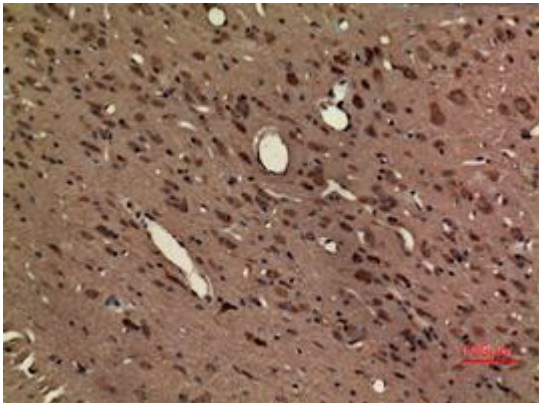
Conjugation: Unconjugated

Modification: Unmodified

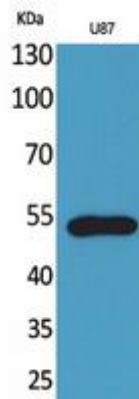
Constituents: PBS (without Mg²⁺ and Ca²⁺), pH 7.3 containing 50% glycerol, 0.5% BSA and 0.02% sodium azide

Research Areas: Microbiology

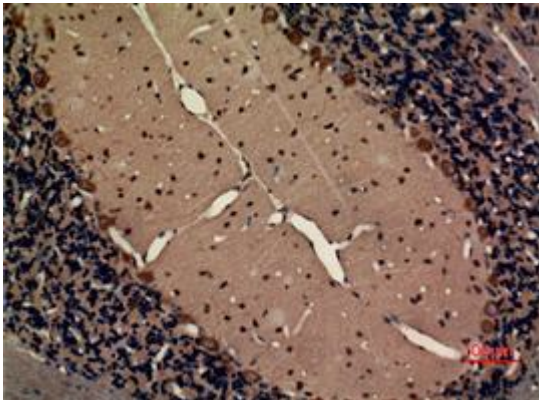
Storage & Shipping: Store at -20°C. Avoid repeated freezing and thawing



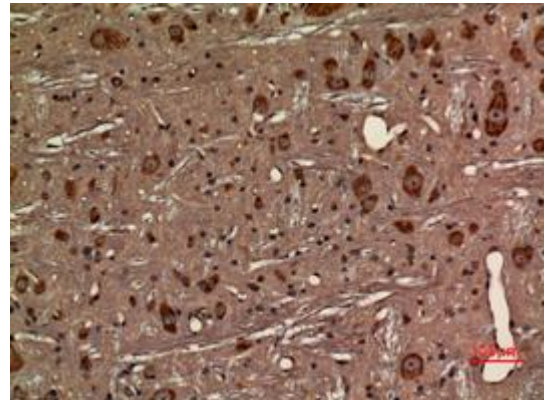
Immunohistochemistry analysis of paraffin-embedded rat brain using Fractalkine Receptor antibody. High-pressure and temperature Sodium Citrate pH 6.0 was used for antigen retrieval.



Western blot analysis of Fractalkine Receptor in U87 lysates using Fractalkine Receptor antibody.



Immunohistochemistry analysis of paraffin-embedded rat brain using Fractalkine Receptor antibody. High-pressure and temperature Sodium Citrate pH 6.0 was used for antigen retrieval.



Immunohistochemistry analysis of paraffin-embedded rat brain using Fractalkine Receptor antibody. High-pressure and temperature Sodium Citrate pH 6.0 was used for antigen retrieval.