

FPR1 RABBIT PAB

Cat.#: S221237

Product Name: Anti-FPR1 Rabbit Polyclonal Antibody

Synonyms: FPR; FMLP

UNIPROT ID: P21462 (Gene Accession - NP_002020)

Background: This gene encodes a G protein-coupled receptor of mammalian phagocytic cells that is a member of the G-protein coupled receptor 1 family. The protein mediates the response of phagocytic cells to invasion of the host by microorganisms and is important in host defense and inflammation.

Immunogen: Synthetic peptide of human FPR1

Applications: ELISA, WB, IHC

Recommended Dilutions: IHC: 50-200;WB: 500-2000;ELISA: 5000-10000

Host Species: Rabbit

Clonality: Rabbit Polyclonal

Isotype: Immunogen-specific rabbit IgG

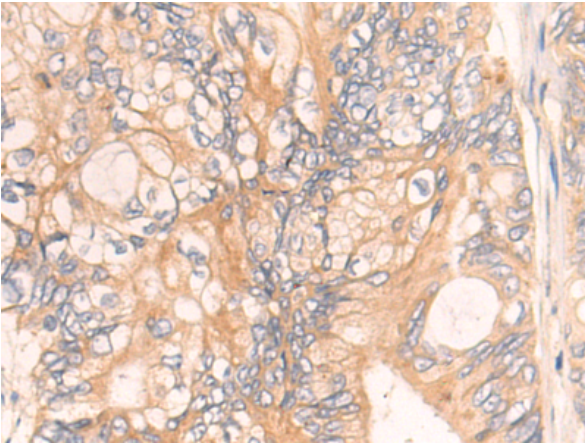
Purification: Antigen affinity purification

Species Reactivity: Human, Mouse

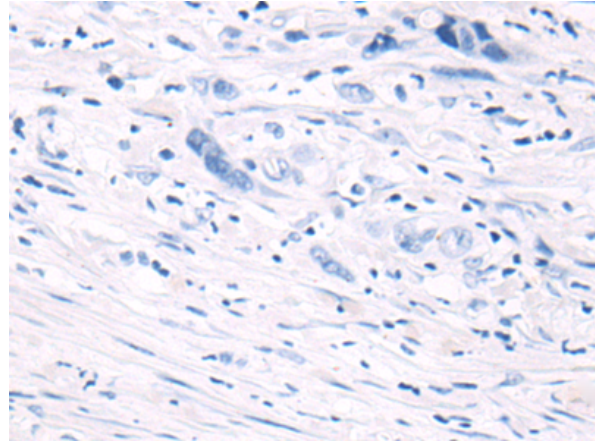
Constituents: PBS (without Mg²⁺ and Ca²⁺), pH 7.4, 150 mM NaCl, 0.05% Sodium Azide and 40% glycerol

Research Areas: Cardiovascular, Immunology

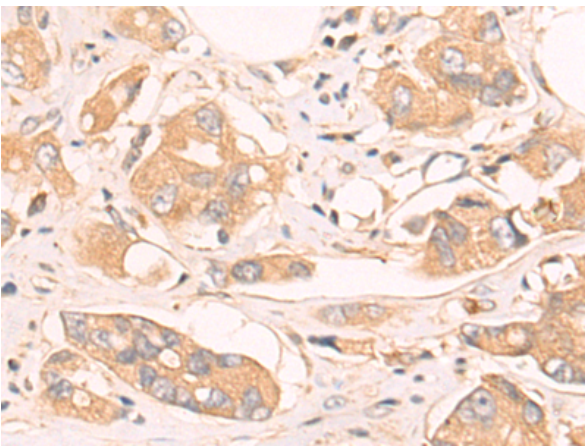
Storage & Shipping: Store at -20°C. Avoid repeated freezing and thawing



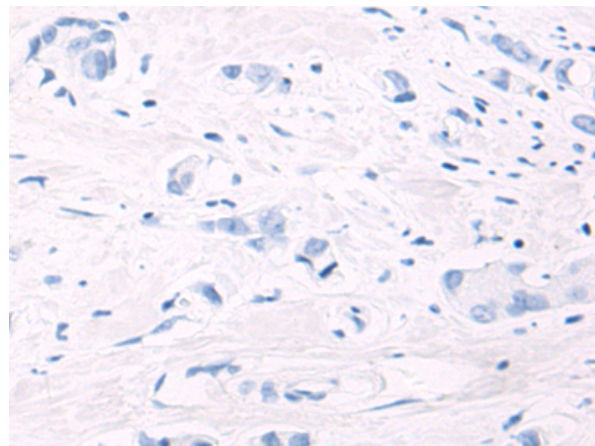
Immunohistochemistry analysis of paraffin embedded Human colorectal cancer tissue using 221237(FPR1 Antibody) at a dilution of 1/50(Cytoplasm and Cell membrane).



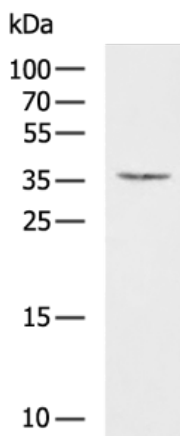
In comparison with the IHC on the left, the same paraffin-embedded Human colorectal cancer tissue is first treated with the synthetic peptide and then with 221237(Anti-FPR1 Antibody) at dilution 1/50.



The image on the left is immunohistochemistry of paraffin-embedded Human breast cancer tissue using 221237(Anti-FPR1 Antibody) at a dilution of 1/50.



In comparison with the IHC on the left, the same paraffin-embedded Human breast cancer tissue is first treated with synthetic peptide and then with D262749(Anti-FPR1 Antibody) at dilution 1/50.



Gel: 12%SDS-PAGE, Lysate: 40 µg;
Lane: Mouse liver tissue lysate;
Primary antibody: 221237(FPR1 Antibody) at dilution 1/1000;
Secondary antibody: HRP-conjugated Goat anti rabbit IgG at 1/5000 dilution;
Exposure time: 3 seconds



Product Description

Pioneering GTPase and Oncogene Product Development since 2010
