

## FOXP3 MOUSE (7H9) MAB

**Cat.#:** N261412

**Product Name:** Anti-FOXP3 Mouse (7H9) Monoclonal Antibody

**Synonyms:** FOXP3; IPEX; JM2; Forkhead box protein P3; Scurfin

**UNIPROT ID:** Q9BZS1

**Background:** Defects in FOXP3 are the cause of immunodeficiency polyendocrinopathy, enteropathy, X-linked syndrome (IPEX) [MIM:304790]; also known as X-linked autoimmunity-immunodeficiency syndrome. IPEX is characterized by neonatal onset insulin-dependent diabetes mellitus, infections, secretory diarrhea, thrombocytopenia, anemia and eczema. It is usually lethal in infancy.

**Immunogen:** Purified recombinant human FOXP3 protein fragments expressed in E.coli.

**Applications:** WB, ICC/IF

**Recommended Dilutions:** WB: 1/500-1/1000 IF: 1/50-1/200

**Host Species:** Mouse

**Clonality:** Mouse Monoclonal

**Clone ID:** 7H9-D6-A10

**MW:** Calculated MW: 47 kDa; Observed MW: 47 kDa

**Isotype:** IgG1

**Purification:** Affinity Purified

**Species Reactivity:** Transfected

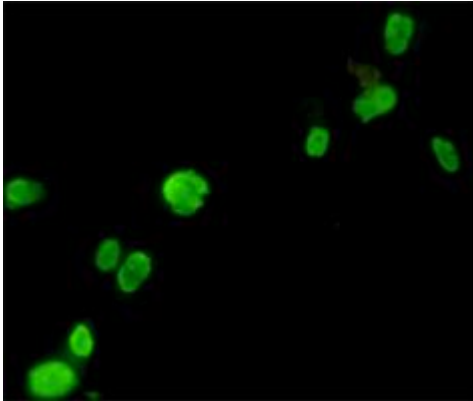
**Conjugation:** Unconjugated

**Modification:** Unmodified

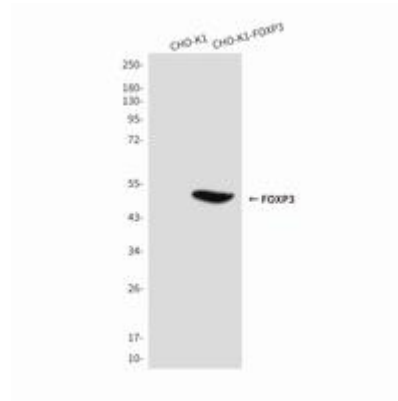
**Constituents:** PBS (without Mg<sup>2+</sup> and Ca<sup>2+</sup>), pH 7.3 containing 50% glycerol, 0.5% BSA and 0.02% sodium azide

**Research Areas:** Cell Biology

**Storage & Shipping:** Store at -20°C. Avoid repeated freezing and thawing



Immunocytochemistry analysis of CHO-K1 cells transfected with FOXP3 using FOXP3 mouse (7H9) mAb which transfected by FOXP3 using FOXP3 antibody.



Western blot analysis of FOXP3 in CHO-K1 lysates (A) and CHO-K1 transfected by FOXP3 (B) lysates using FOXP3 antibody.