

## FOXK2 RABBIT PAB

**Cat.#:** S222224

**Product Name:** Anti-FOXK2 Rabbit Polyclonal Antibody

**Synonyms:** ILF; ILF1; ILF-1

**UNIPROT ID:** Q01167 (Gene Accession - NP\_004505 )

**Background:** The protein encoded by this gene contains a fork head DNA binding domain. This protein can bind to the purine-rich motifs of the HIV long terminal repeat (LTR), and to the similar purine-rich motif in the interleukin 2 (IL2) promoter. It may be involved in the regulation of viral and cellular promoter elements.

**Immunogen:** Synthetic peptide of human FOXK2

**Applications:** ELISA, WB, IHC

**Recommended Dilutions:** IHC: 50-300;WB: 1000-5000;ELISA: 5000-10000

**Host Species:** Rabbit

**Clonality:** Rabbit Polyclonal

**Isotype:** Immunogen-specific rabbit IgG

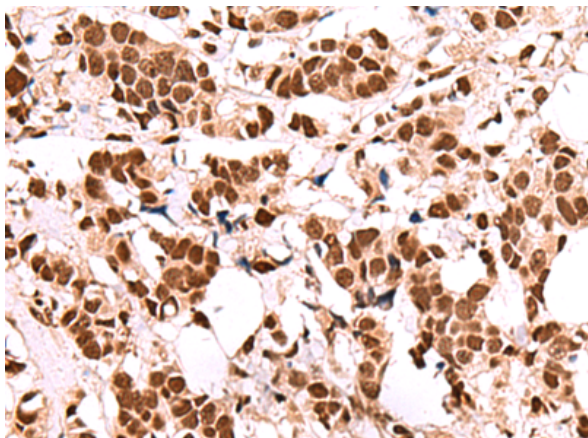
**Purification:** Antigen affinity purification

**Species Reactivity:** Human

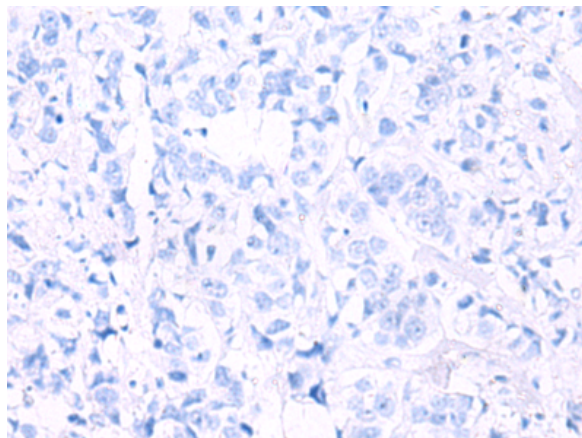
**Constituents:** PBS (without Mg<sup>2+</sup> and Ca<sup>2+</sup>), pH 7.4, 150 mM NaCl, 0.05% Sodium Azide and 40% glycerol

**Research Areas:** Epigenetics and Nuclear Signaling, Immunology

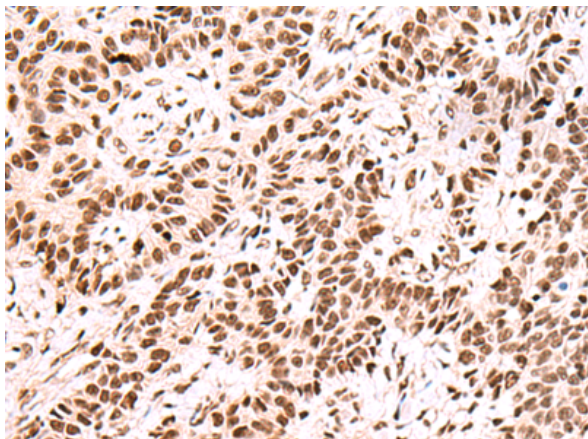
**Storage & Shipping:** Store at -20°C. Avoid repeated freezing and thawing



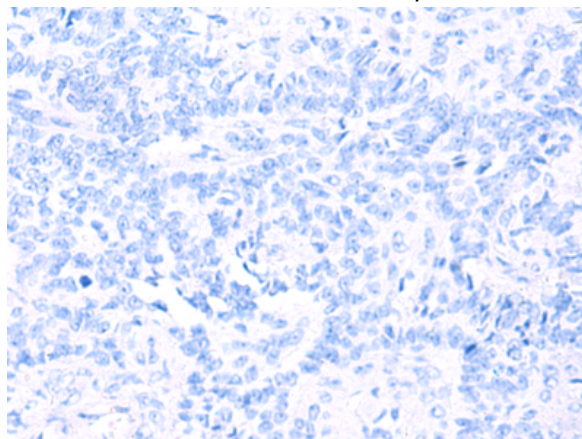
Immunohistochemistry analysis of paraffin embedded Human breast cancer tissue using 222224(FO XK2 Antibody) at a dilution of 1/60(Nucleus).



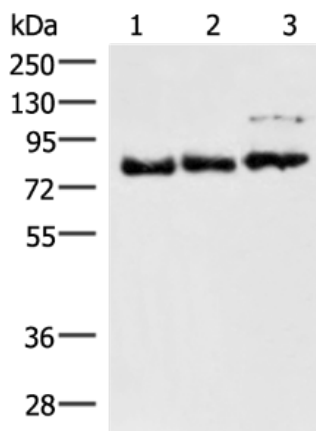
In comparison with the IHC on the left, the same paraffin-embedded Human breast cancer tissue is first treated with the synthetic peptide and then with 222224(Anti-FO XK2 Antibody) at dilution 1/60.



The image on the left is immunohistochemistry of paraffin-embedded Human ovarian cancer tissue using 222224(Anti-FO XK2 Antibody) at a dilution of 1/60.



In comparison with the IHC on the left, the same paraffin-embedded Human ovarian cancer tissue is first treated with synthetic peptide and then with D264247(Anti-FO XK2 Antibody) at dilution 1/60.



Gel: 6%SDS-PAGE, Lysate: 40 µg;  
Lane 1-3: 231, A172 and HepG2 cell lysates;  
Primary antibody: 222224(FO XK2 Antibody) at dilution 1/800;  
Secondary antibody: Goat anti rabbit IgG at 1/8000 dilution;  
Exposure time: 1 minute



# Product Description

Pioneering GTPase and Oncogene Product Development since 2010

---