

FOXG1 RABBIT PAB

Cat.#: S221230

Product Name: Anti-FOXG1 Rabbit Polyclonal Antibody

Synonyms: BFI; BF2; QIN; FKH2; HBF2; HFK1; HFK2; HFK3; KHL2; FHKL3; FKHL1; FKHL2; FKHL3; FKHL4; HBF-1; HBF-2; HBF-3; FOXG1A; FOXG1B; FOXG1C; HBF-G2

UNIPROT ID: P55316 (Gene Accession - NP_005240)

Background: This locus encodes a member of the forked-head transcription factor family. The encoded protein, which functions as a repressor, may play a role in brain development. Mutations at this locus have been associated with Rett syndrome.

Immunogen: Synthetic peptide of human FOXG1

Applications: ELISA, IHC

Recommended Dilutions: IHC: 25-100; ELISA: 2000-5000

Host Species: Rabbit

Clonality: Rabbit Polyclonal

Isotype: Immunogen-specific rabbit IgG

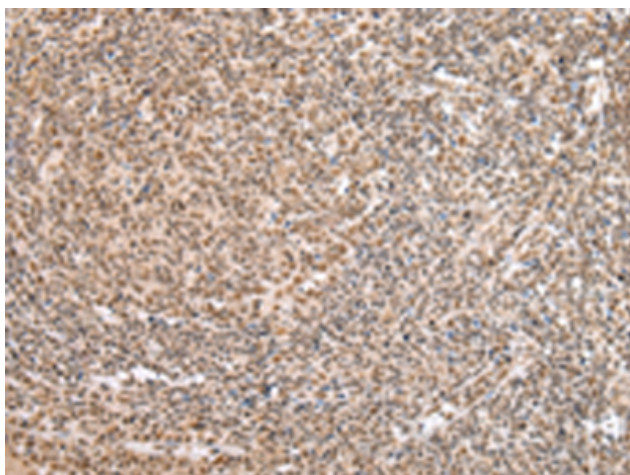
Purification: Antigen affinity purification

Species Reactivity: Human, Mouse, Rat

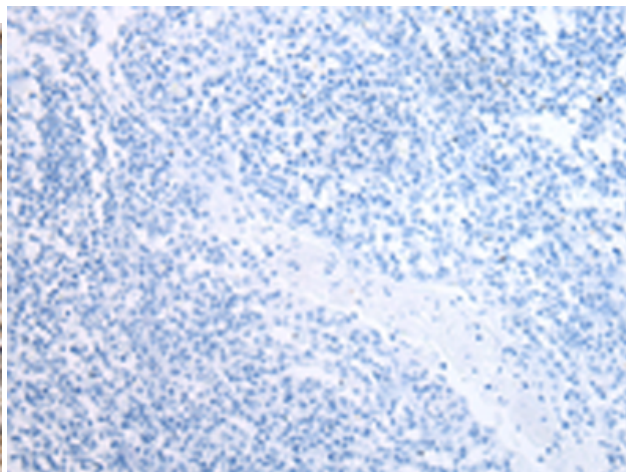
Constituents: PBS (without Mg²⁺ and Ca²⁺), pH 7.4, 150 mM NaCl, 0.05% Sodium Azide and 40% glycerol

Research Areas: Epigenetics and Nuclear Signaling, Neuroscience

Storage & Shipping: Store at -20°C. Avoid repeated freezing and thawing



Immunohistochemistry analysis of paraffin embedded Human tonsil tissue using 221230(FOXG1 Antibody) at a dilution of 1/35(Nucleus).



In comparison with the IHC on the left, the same paraffin-embedded Human tonsil tissue is first treated with the synthetic peptide and then with 221230(Anti-FOXG1 Antibody) at dilution 1/35.