

FOLATE BINDING PROTEIN RABBIT MAB

Cat.#: N262230

Product Name: Anti-Folate Binding Protein Rabbit Monoclonal Antibody

Synonyms: FOLR1; FOLR; Folate receptor alpha; FR-alpha; Adult folate-binding protein; FBP; Folate receptor 1; Folate receptor; adult; KB cells FBP; Ovarian tumor-associated antigen MOv18

UNIPROT ID: P15328

Background: Binds to folate and reduced folic acid derivatives and mediates delivery of 5-methyltetrahydrofolate to the interior of cells.

Immunogen: A synthetic peptide of human Folate Binding Protein

Applications: WB,IHC-P

Recommended Dilutions: WB: 1/500-1/1000 IHC: 1/50-1/100

Host Species: Rabbit

Clonality: Rabbit Monoclonal

Clone ID: R02-3G2

MW: Calculated MW: 30 kDa; Observed MW: 40 kDa

Isotype: IgG

Purification: Affinity Purified

Species Reactivity: Human

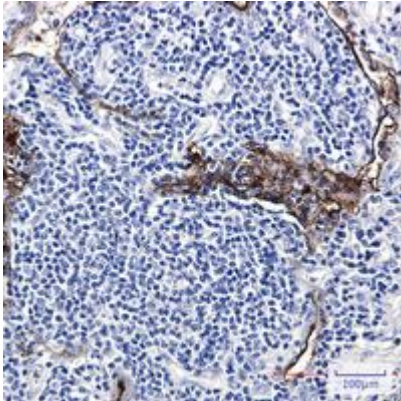
Conjugation: Unconjugated

Modification: Unmodified

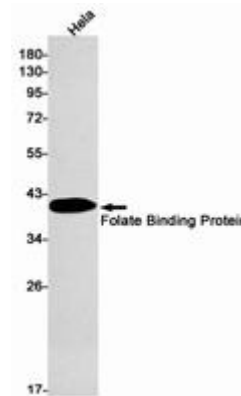
Constituents: PBS (without Mg²⁺ and Ca²⁺), pH 7.3 containing 50% glycerol, 0.5% BSA and 0.02% sodium azide

Research Areas: Tags & Cell Markers

Storage & Shipping: Store at -20°C. Avoid repeated freezing and thawing



Immunohistochemistry analysis of paraffin-embedded Human lung cancer using Folate Binding Protein antibody. High-pressure and temperature Sodium Citrate pH 6.0 was used for antigen retrieval.



Western blot analysis of Folate Binding Protein in HeLa lysates using Folate Binding Protein antibody.