

FNBP1L RABBIT PAB

Cat.#: S222043

Product Name: Anti-FNBP1L Rabbit Polyclonal Antibody

Synonyms: TOCA1; Clorf39

UNIPROT ID: Q5T0N5 (Gene Accession - NP_001157945)

Background: The protein encoded by this gene binds to both CDC42 and N-WASP. This protein promotes CDC42-induced actin polymerization by activating the N-WASP-WIP complex and, therefore, is involved in a pathway that links cell surface signals to the actin cytoskeleton. Alternative splicing results in multiple transcript variants encoding different isoforms.

Immunogen: Synthetic peptide of human FNBP1L

Applications: ELISA, WB, IHC

Recommended Dilutions: IHC: 20-100;WB: 500-2000;ELISA: 5000-10000

Host Species: Rabbit

Clonality: Rabbit Polyclonal

Isotype: Immunogen-specific rabbit IgG

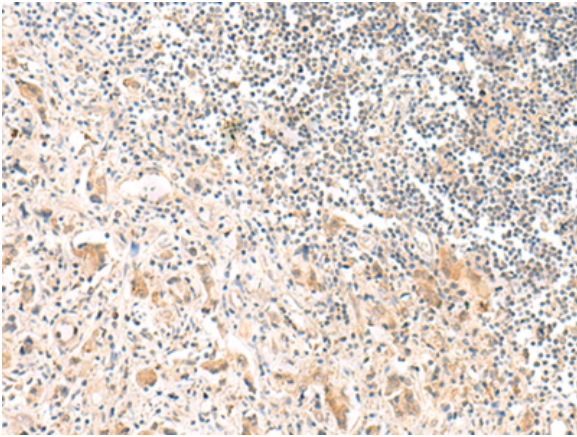
Purification: Antigen affinity purification

Species Reactivity: Human, Mouse, Rat

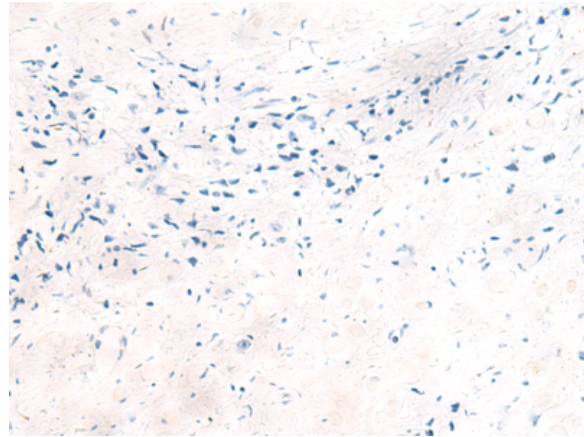
Constituents: PBS (without Mg²⁺ and Ca²⁺), pH 7.4, 150 mM NaCl, 0.05% Sodium Azide and 40% glycerol

Research Areas: Signal Transduction, Neuroscience

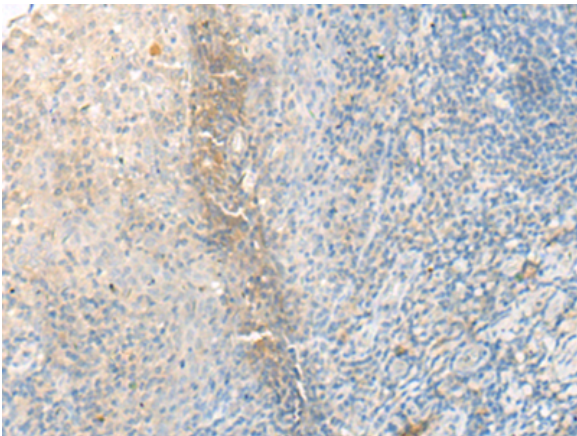
Storage & Shipping: Store at -20°C. Avoid repeated freezing and thawing



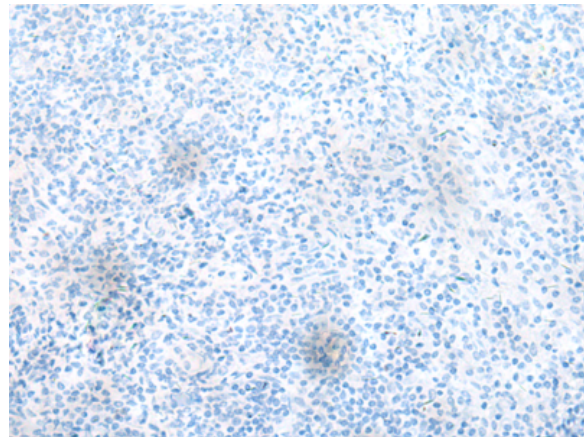
Immunohistochemistry analysis of paraffin embedded Human prostate cancer tissue using 222043(FNBPIL Antibody) at a dilution of 1/30(Cytoplasm).



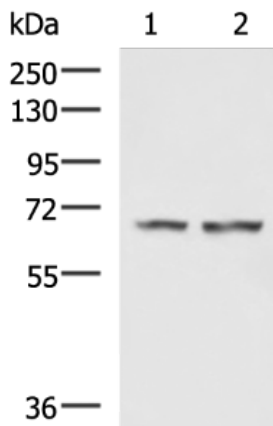
In comparison with the IHC on the left, the same paraffin-embedded Human prostate cancer tissue is first treated with the synthetic peptide and then with 222043(Anti-FNBPIL Antibody) at dilution 1/30.



The image on the left is immunohistochemistry of paraffin-embedded Human tonsil tissue using 222043(Anti-FNBPIL Antibody) at a dilution of 1/30.



In comparison with the IHC on the left, the same paraffin-embedded Human tonsil tissue is first treated with synthetic peptide and then with D263927(Anti-FNBPIL Antibody) at dilution 1/30.



Gel: 8%SDS-PAGE, Lysate: 40 µg;
Lane 1-2: Human cerebella tissue, Human cerebrum tissue lysates;
Primary antibody: 222043(FNBPIL Antibody) at dilution 1/750;
Secondary antibody: HRP-conjugated Goat anti rabbit IgG at 1/5000 dilution;
Exposure time: 3 minutes



Product Description

Pioneering GTPase and Oncogene Product Development since 2010
