

## FLOTILLIN 1 RABBIT PAB

**Cat.#:** N225586

**Product Name:** Anti-Flotillin 1 Rabbit pAb

**Synonyms:** Flotillin-1

**UNIPROT ID:** O75955

**Background:** May act as a scaffolding protein within caveolar membranes, functionally participating in formation of caveolae or caveolae-like vesicles.

**Immunogen:** A synthesized peptide derived from human Flotillin 1

**Applications:** WB,IHC-P,IP

**Recommended Dilutions:** WB: 1/500-1/1000 IHC: 1/50-1/100 IP: 1/20

**Host Species:** Rabbit

**Clonality:** Rabbit Polyclonal

**Clone ID:** -

**MW:** Calculated MW: 47 kDa; Observed MW: 47 kDa

**Isotype:** IgG

**Purification:** Affinity Chromatography

**Species Reactivity:** Human,Mouse,Rat

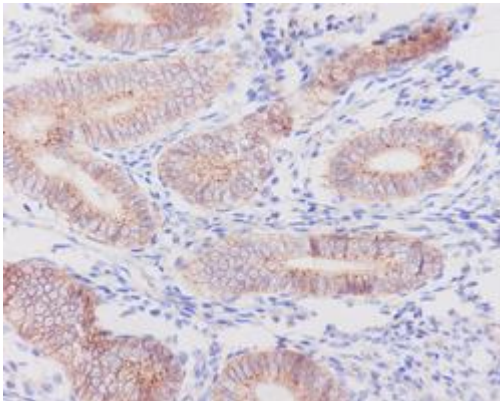
**Conjugation:** Unconjugated

**Modification:** Unmodified

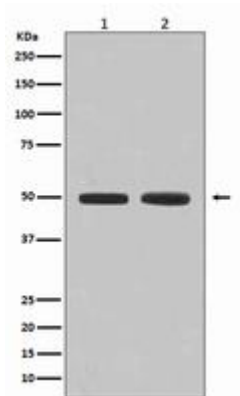
**Constituents:** PBS (without Mg<sup>2+</sup> and Ca<sup>2+</sup>), pH 7.3 containing 50% glycerol, 0.5% BSA and 0.02% sodium azide

**Research Areas:** Cell Biology

**Storage & Shipping:** Store at -20°C. Avoid repeated freezing and thawing



Immunohistochemistry analysis of paraffin-embedded Human uterus using Flotillin 1 antibody. High-pressure and temperature Sodium Citrate pH 6.0 was used for antigen retrieval.



Western blot analysis of Flotillin 1 in (1) HeLa lysates; (2) K562 lysates using Flotillin 1 antibody.