

## FLOT2 RABBIT PAB

**Cat.#:** S218868

**Product Name:** Anti-FLOT2 Rabbit Polyclonal Antibody

**Synonyms:** ESA; ECS1; ESA1; ECS-1; M17S1

**UNIPROT ID:** Q14254 (Gene Accession - BC017292 )

**Background:** Caveolae are small domains on the inner cell membrane involved in vesicular trafficking and signal transduction. This gene encodes a caveolae-associated, integral membrane protein, which is thought to function in neuronal signaling. May act as a scaffolding protein within caveolar membranes, functionally participating in formation of caveolae or caveolae-like vesicles. May be involved in epidermal cell adhesion and epidermal structure and function.

**Immunogen:** Fusion protein of human FLOT2

**Applications:** ELISA, WB, IHC

**Recommended Dilutions:** IHC: 50-300;WB: 500-2000;ELISA: 5000-10000

**Host Species:** Rabbit

**Clonality:** Rabbit Polyclonal

**Isotype:** Immunogen-specific rabbit IgG

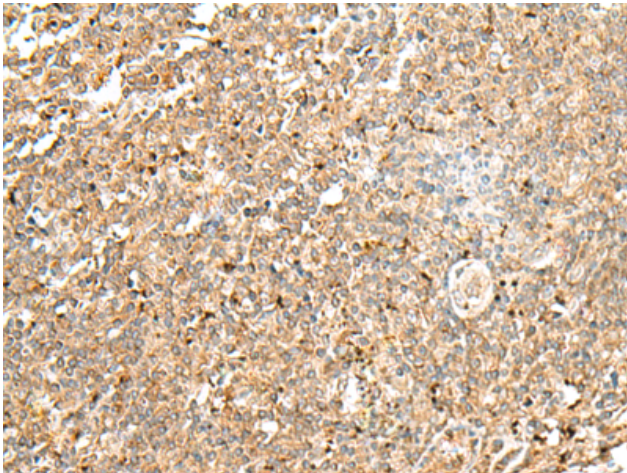
**Purification:** Antigen affinity purification

**Species Reactivity:** Human, Mouse, Rat

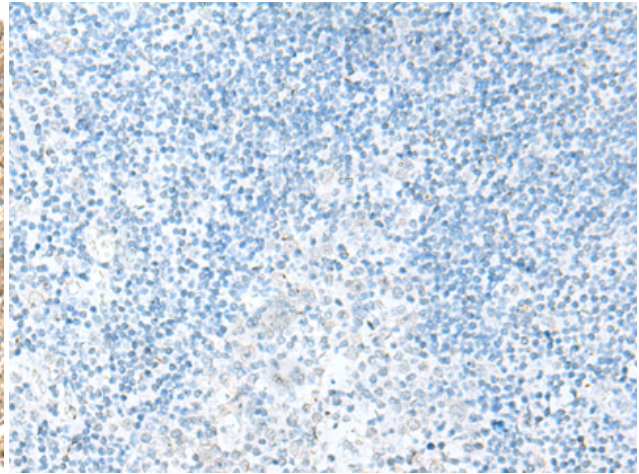
**Constituents:** PBS (without Mg<sup>2+</sup> and Ca<sup>2+</sup>), pH 7.4, 150 mM NaCl, 0.05% Sodium Azide and 40% glycerol

**Research Areas:** Signal Transduction, Neuroscience

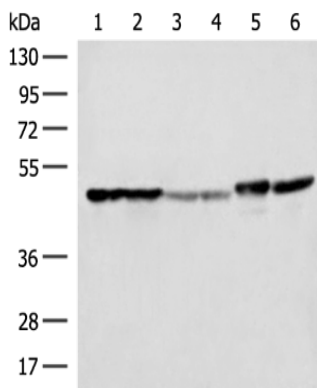
**Storage & Shipping:** Store at -20°C. Avoid repeated freezing and thawing



Immunohistochemistry analysis of paraffin embedded Human tonsil tissue using 218868(FLOT2 Antibody) at a dilution of 1/50(Cytoplasm and Cell membrane).



In comparison with the IHC on the left, the same paraffin-embedded Human tonsil tissue is first treated with the fusion protein and then with 218868(Anti-FLOT2 Antibody) at dilution 1/50.



Gel: 8%SDS-PAGE, Lysate: 40  $\mu$ g;  
Lane 1-6: HeLa, A375, Human fetal liver tissue,  
Human fetal brain tissue, HepG2 cell and  
Mouse brain tissue lysates;  
Primary antibody: 218868(FLOT2 Antibody) at  
dilution 1/350;  
Secondary antibody: Goat anti rabbit IgG at  
1/8000 dilution;  
Exposure time: 3 seconds