

FKBP7 RABBIT PAB

Cat.#: S218182

Product Name: Anti-FKBP7 Rabbit Polyclonal Antibody

Synonyms: FKBP23; PPIase

UNIPROT ID: Q9Y680 (Gene Accession - BC009711)

Background: The protein encoded by this gene belongs to the FKBP-type peptidyl-prolyl cis/trans isomerase (PPIase) family. Members of this family exhibit PPIase activity and function as molecular chaperones. A similar protein in mouse is located in the endoplasmic reticulum and binds calcium.

Immunogen: Fusion protein of human FKBP7

Applications: ELISA, WB, IHC

Recommended Dilutions: IHC: 30-150;WB: 500-2000;ELISA: 5000-10000

Host Species: Rabbit

Clonality: Rabbit Polyclonal

Isotype: Immunogen-specific rabbit IgG

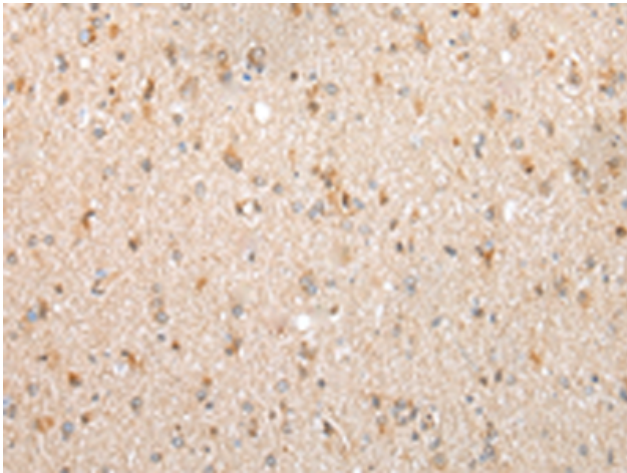
Purification: Antigen affinity purification

Species Reactivity: Human, Mouse

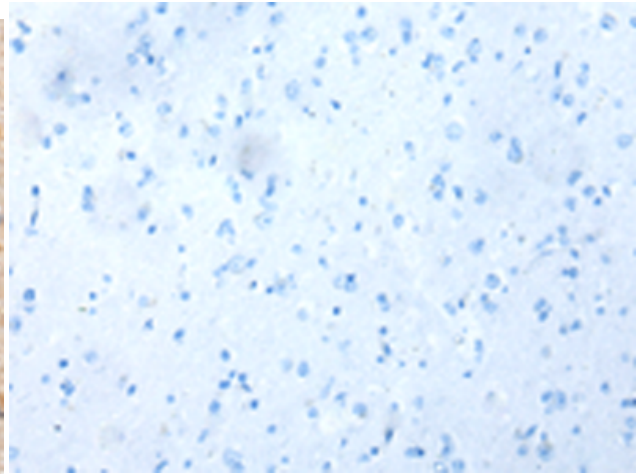
Constituents: PBS (without Mg²⁺ and Ca²⁺), pH 7.4, 150 mM NaCl, 0.05% Sodium Azide and 40% glycerol

Research Areas: Signal Transduction

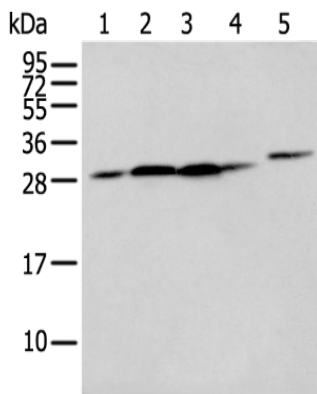
Storage & Shipping: Store at -20°C. Avoid repeated freezing and thawing



Immunohistochemistry analysis of paraffin embedded Human brain tissue using 218182(FKBP7 Antibody) at a dilution of 1/40(Cytoplasm).



In comparison with the IHC on the left, the same paraffin-embedded Human brain tissue is first treated with the fusion protein and then with 218182(Anti-FKBP7 Antibody) at dilution 1/40.



Gel: 12%SDS-PAGE, Lysate: 40 μ g;
 Lane 1-5: Human heart tissue, 293T cell,
 Human fetal liver tissue, A549 and Hepg2 cell;
 Primary antibody: 218182(FKBP7 Antibody) at
 dilution 1/400;
 Secondary antibody: Goat anti rabbit IgG at
 1/8000 dilution;
 Exposure time: 5 seconds