

FKBP6 RABBIT MAB

Cat.#: N263334

Product Name: Anti-FKBP6 Rabbit Monoclonal Antibody

Synonyms: FKBP36

UNIPROT ID: O75344

Background: Co-chaperone required during spermatogenesis to repress transposable elements and prevent their mobilization, which is essential for the germline integrity.

Immunogen: A synthetic peptide of human FKBP6

Applications: WB,IHC-P

Recommended Dilutions: WB: 1/500-1/1000 IHC: 1/50-1/100

Host Species: Rabbit

Clonality: Rabbit Monoclonal

Clone ID: R05-4G2

MW: Calculated MW: 37 kDa; Observed MW: 37 kDa

Isotype: IgG

Purification: Affinity Purified

Species Reactivity: Human,Mouse,Rat

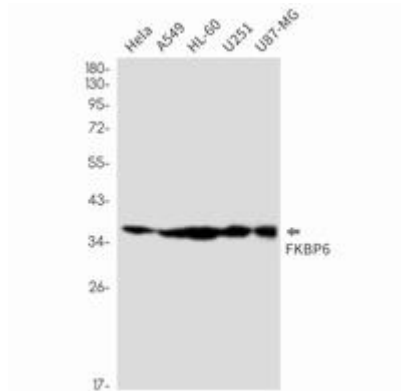
Conjugation: Unconjugated

Modification: Unmodified

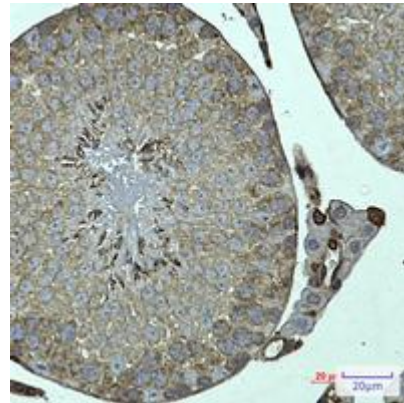
Constituents: PBS (without Mg²⁺ and Ca²⁺), pH 7.3 containing 50% glycerol, 0.5% BSA and 0.02% sodium azide

Research Areas: Immunology

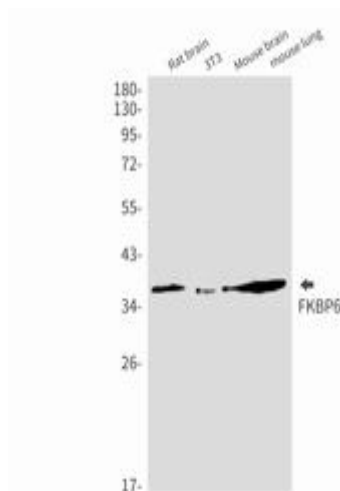
Storage & Shipping: Store at -20°C. Avoid repeated freezing and thawing



Western blot analysis of FKBP6 in HeLa, A549, HL-60, U251, U87-MG lysates using FKBP6 antibody



Immunohistochemistry analysis of paraffin-embedded mouse testis using FKBP6 antibody. High-pressure and temperature Sodium Citrate pH 6.0 was used for antigen retrieval.



Western blot analysis of FKBP6 in rat brain, 3T3, mouse brain, mouse lung lysates using FKBP6 antibody.