

FKBP5 RABBIT PAB

Cat.#: S222038

Product Name: Anti-FKBP5 Rabbit Polyclonal Antibody

Synonyms: P54; AIG6; FKBP51; FKBP54; PPIase; Ptg-10

UNIPROT ID: Q13451 (Gene Accession - NP_004108)

Background: The protein encoded by this gene is a member of the immunophilin protein family, which play a role in immunoregulation and basic cellular processes involving protein folding and trafficking. This encoded protein is a cis-trans prolyl isomerase that binds to the immunosuppressants FK506 and rapamycin. It is thought to mediate calcineurin inhibition. It also interacts functionally with mature hetero-oligomeric progesterone receptor complexes along with the 90 kDa heat shock protein and P23 protein. This gene has been found to have multiple polyadenylation sites. Alternative splicing results in multiple transcript variants.

Immunogen: Synthetic peptide of human FKBP5

Applications: ELISA, WB, IHC

Recommended Dilutions: IHC: 50-300;WB: 500-2000;ELISA: 5000-10000

Host Species: Rabbit

Clonality: Rabbit Polyclonal

Isotype: Immunogen-specific rabbit IgG

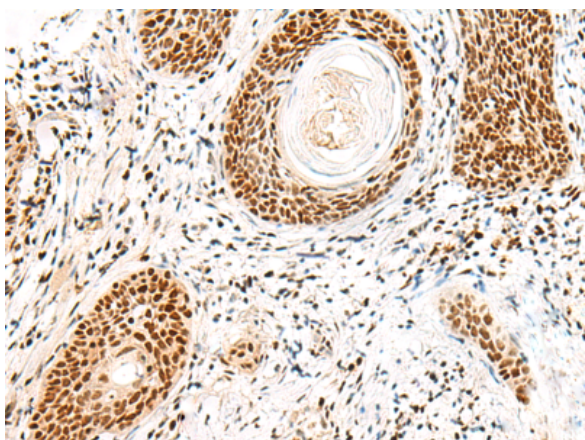
Purification: Antigen affinity purification

Species Reactivity: Human

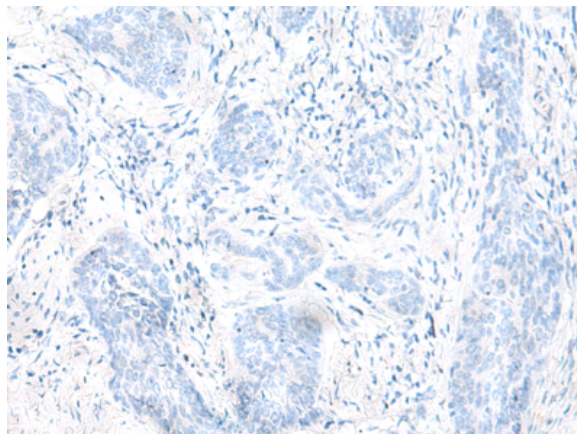
Constituents: PBS (without Mg²⁺ and Ca²⁺), pH 7.4, 150 mM NaCl, 0.05% Sodium Azide and 40% glycerol

Research Areas: Signal Transduction, Immunology

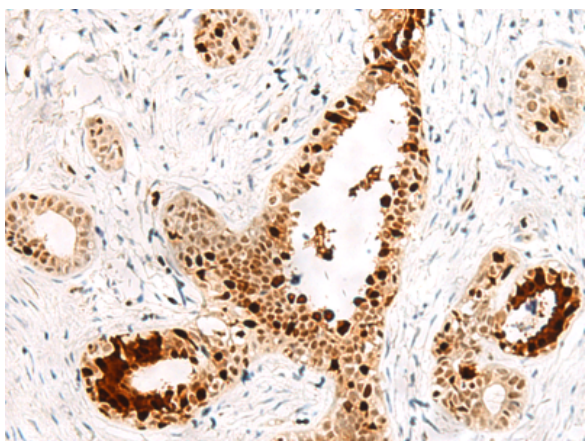
Storage & Shipping: Store at -20°C. Avoid repeated freezing and thawing



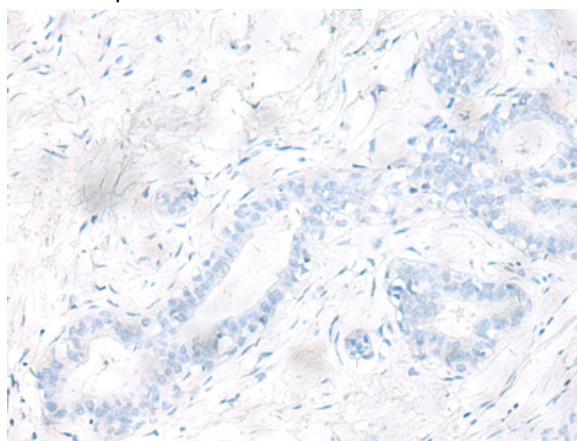
Immunohistochemistry analysis of paraffin embedded Human esophagus cancer tissue using 222038(FKBP5 Antibody) at a dilution of 1/50(Nucleus).



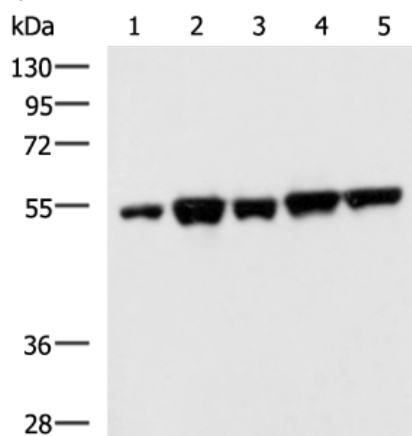
In comparison with the IHC on the left, the same paraffin-embedded Human esophagus cancer tissue is first treated with the synthetic peptide and then with 222038(Anti-FKBP5 Antibody) at dilution 1/50.



The image on the left is immunohistochemistry of paraffin-embedded Human breast cancer tissue using 222038(Anti-FKBP5 Antibody) at a dilution of 1/50.



In comparison with the IHC on the left, the same paraffin-embedded Human breast cancer tissue is first treated with synthetic peptide and then with D263920(Anti-FKBP5 Antibody) at dilution 1/50.



Gel: 8%SDS-PAGE, Lysate: 40 µg;
 Lane 1-5: PC3, K562, HepG2, HeLa, A172 cell lysates;
 Primary antibody: 222038(FKBP5 Antibody) at dilution 1/600;
 Secondary antibody: HRP-conjugated Goat anti rabbit IgG at 1/5000 dilution;
 Exposure time: 30 seconds



Product Description

Pioneering GTPase and Oncogene Product Development since 2010
