

FIS1 RABBIT PAB

Cat.#: S217452

Product Name: Anti-FIS1 Rabbit Polyclonal Antibody

Synonyms: TTC11; CGI-135

UNIPROT ID: Q9Y3D6 (Gene Accession - BC003540)

Background: The balance between fission and fusion regulates the morphology of mitochondria. TTC11 is a component of a mitochondrial complex that promotes mitochondrial fission (James et al., 2003 [PubMed 12783892]).[supplied by OMIM, Mar 2008]

Immunogen: Fusion protein of human FIS1

Applications: ELISA, WB, IHC

Recommended Dilutions: IHC: 50-200;WB: 1000-5000;ELISA: 5000-10000

Host Species: Rabbit

Clonality: Rabbit Polyclonal

Isotype: Immunogen-specific rabbit IgG

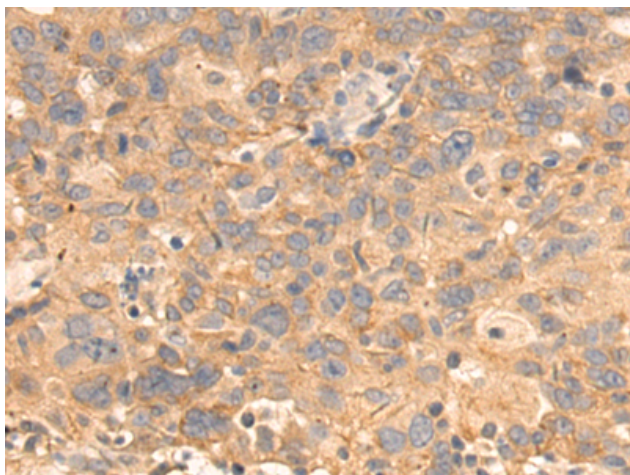
Purification: Antigen affinity purification

Species Reactivity: Human, Mouse, Rat

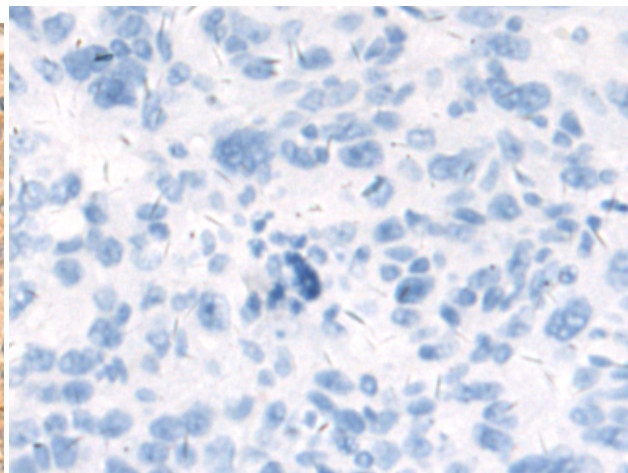
Constituents: PBS (without Mg²⁺ and Ca²⁺), pH 7.4, 150 mM NaCl, 0.05% Sodium Azide and 40% glycerol

Research Areas: Cancer, Metabolism

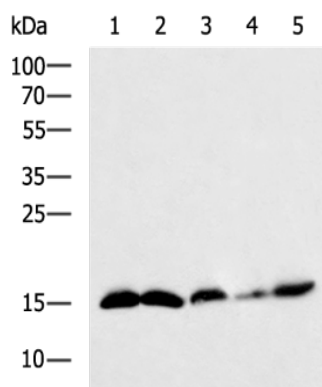
Storage & Shipping: Store at -20°C. Avoid repeated freezing and thawing



Immunohistochemistry analysis of paraffin embedded Human breast cancer tissue using 217452(FIS1 Antibody) at a dilution of 1/55(Cytoplasm).



In comparison with the IHC on the left, the same paraffin-embedded Human breast cancer tissue is first treated with the fusion protein and then with 217452(Anti-FIS1 Antibody) at dilution 1/55.



Gel: 12%SDS-PAGE, Lysate: 40 μ g;
 Lane 1-5: Mouse heart tissue, Raji cell, Mouse spleen tissue, Jurkat cell, Hela cell lysates;
 Primary antibody: 217452(FIS1 Antibody) at dilution 1/1200;
 Secondary antibody: HRP-conjugated Goat anti rabbit IgG at 1/5000 dilution;
 Exposure time: 15 seconds