

## FIBRONECTIN RABBIT PAB

**Cat.#:** N225363

**Product Name:** Anti-Fibronectin Rabbit pAb

**Synonyms:** FN1; FN; Fibronectin; FN; Cold-insoluble globulin; CIG

**UNIPROT ID:** P02751

**Background:** FN1 Fibronectins bind cell surfaces and various compounds including collagen, fibrin, heparin, DNA, and actin. Fibronectins are involved in cell adhesion, cell motility, opsonization, wound healing, and maintenance of cell shape. Mostly heterodimers or multimers of alternatively spliced variants, connected by 2 disulfide bonds near the carboxyl ends; to a lesser extent homodimers.

**Immunogen:** The antiserum was produced against synthesized peptide derived from human Fibronectin 1. AA range:2337-2386

**Applications:** WB,IHC-P,ELISA

**Recommended Dilutions:** WB: 1/500-1/1000 IHC: 1/50-1/100 ELISA: 1/10000

**Host Species:** Rabbit

**Clonality:** Rabbit Polyclonal

**Clone ID:** -

**MW:** Calculated MW: 272 kDa; Observed MW: 260 kDa

**Isotype:** IgG

**Purification:** Affinity Chromatography

**Species Reactivity:** Human,Mouse,Rat

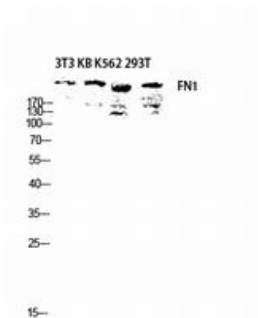
**Conjugation:** Unconjugated

**Modification:** Unmodified

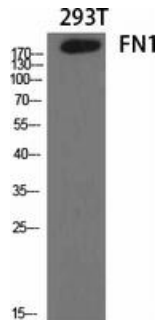
**Constituents:** PBS (without Mg<sup>2+</sup> and Ca<sup>2+</sup>), pH 7.3 containing 50% glycerol, 0.5% BSA and 0.02% sodium azide

**Research Areas:** Cardiovascular

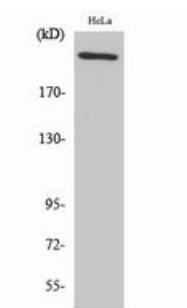
**Storage & Shipping:** Store at -20°C. Avoid repeated freezing and thawing



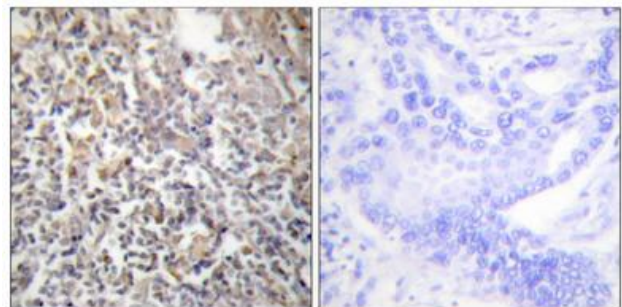
Western blot analysis of Fibronectin in 3T3, KB, K562, 293T lysates using FN1 antibody.



Western blot analysis of Fibronectin in various lysates using Fibronectin antibody.



Western blot analysis of Fibronectin in HeLa lysates using FN1 antibody.



Immunohistochemistry analysis of paraffin-embedded Human thyroid gland tissue using Fibronectin 1 antibody. High-pressure and temperature Sodium Citrate pH 6.0 was used for antigen retrieval. Sample with blocking peptide on the right.